

UEMonitor 操作指导与参考

UEMonitor User manual

(双语版)

— 潘先强(Herbert Pan) —



目 录

一、相关说明 (Foreword)	3
1.1 适用条件 (Suitable Condition)	3
1.2 相关下载 (Related to Download)	3
1.3 设备连接 (Device Connection)	3
二、UEMonitor 安装 (Installation)	4
三、UEMonitor 连接 (Connection)	4
四、日志保存 (Save Log)	7
4.1 自动保存(Automatically Save)	7
4.2 手动保存(Manual save)	8
五、常见分析应用 (Common Analytical Application)	9
5.1 LOG 导入(Import Log)	9
5.2 时间参考系(Time Reference System)	10
5.3 LOG 过滤(Filter Log)	11
5.4 增加消息条目(Add Item)	12
5.5 消息着色(Color the Message)	13
5.6 常用过滤关键字(Common Filtering Keyword)	14

一、相关说明 (Foreword)

1.1 适用条件 (Suitable Condition)

工具/Tools	厂商版本/Manufacturer Revision	适用模组类型/Applicable Module Type
UEMonitor	AT+CGMR/Hi2115_RFxx	BC28/BC35G/BC95/BC68/BC95G

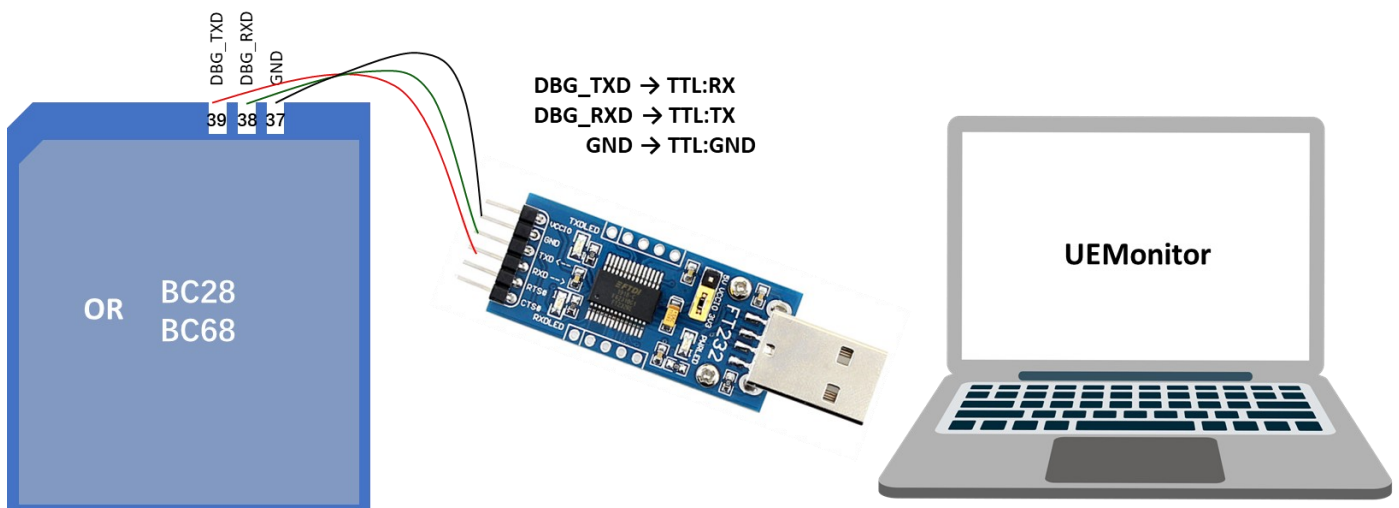
1.2 相关下载 (Related to Download)

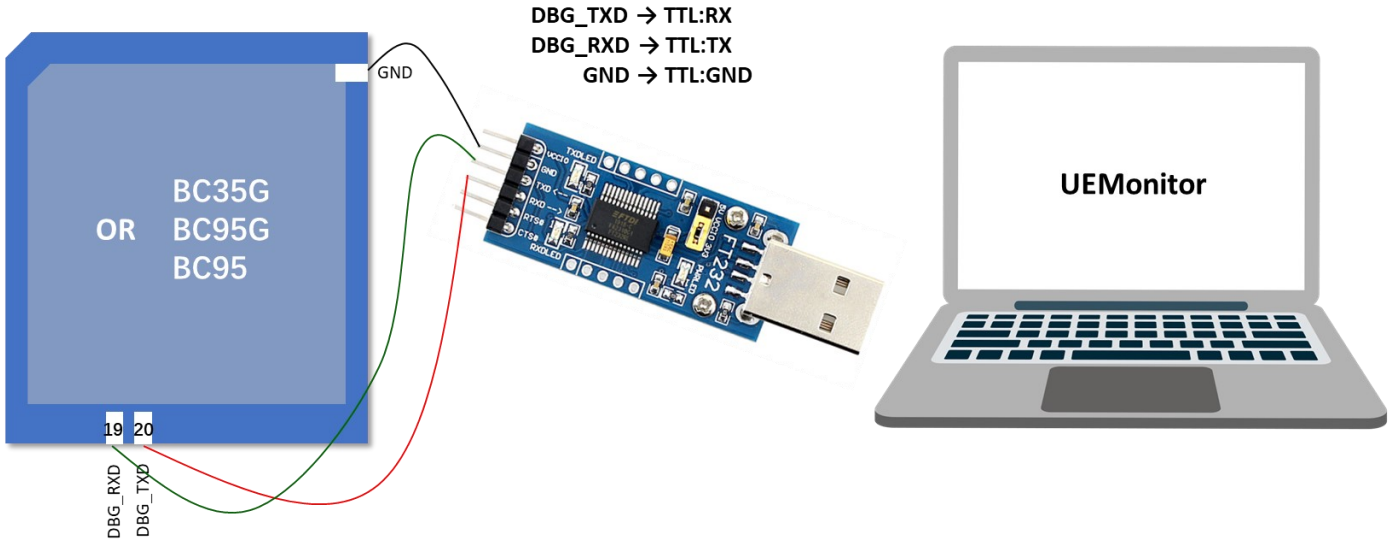
UEMonitor	https://quectel123-my.sharepoint.cn/:u:/g/personal/ae-fae_dom_quectel_com_cn/ERfHTcB_6eVEnD_540j1HVABIR3ZF6Cpst9asPdvJ7-law?e=crS1n6
TE-B Driver	https://quectel123-my.sharepoint.cn/:u:/g/personal/ae-fae_dom_quectel_com_cn/ESNqJMjMjyxGkHKOUyDj2hMBgaJnKVLQImm18qw22ejfTw?e=CTv5k8

1.3 设备连接 (Device Connection)

如果模组已完成贴片或对单独对模组进行调试, 建议参考下面连接方式连接 UEMonitor 并抓取 log;

If the module has been welded or debugged separately, it is recommended that you connect to the UEMonitor and grab the log as shown below.





如果使用 Hi2115 模组对应的 TE-B, 请在“设备管理器→端口”选择第二个 COM 端口 (XR21V1412 USB UART Ch B);
If TE-B corresponding to Hi2115 module is used, from "Device Manager → Ports" to select the second COM port(XR21V1412 USB UART Ch B).

二、UEMonitor 安装 (Installation)

通过上述链接下载 HiStudio 安装包, 并选择合适的安装路径进行安装, 安装后 HiStudio 图标如下;

Download the HiStudio installation package from the above link and select an appropriate installation path. After the installation, the HiStudio icon is as follows.



UEMonitor icon

注意, 如果安装失败或出现其他异常提示, 请检查该电脑是否已安装 Microsoft .NET Framework, 或安装已下载文件中的 setup.exe;

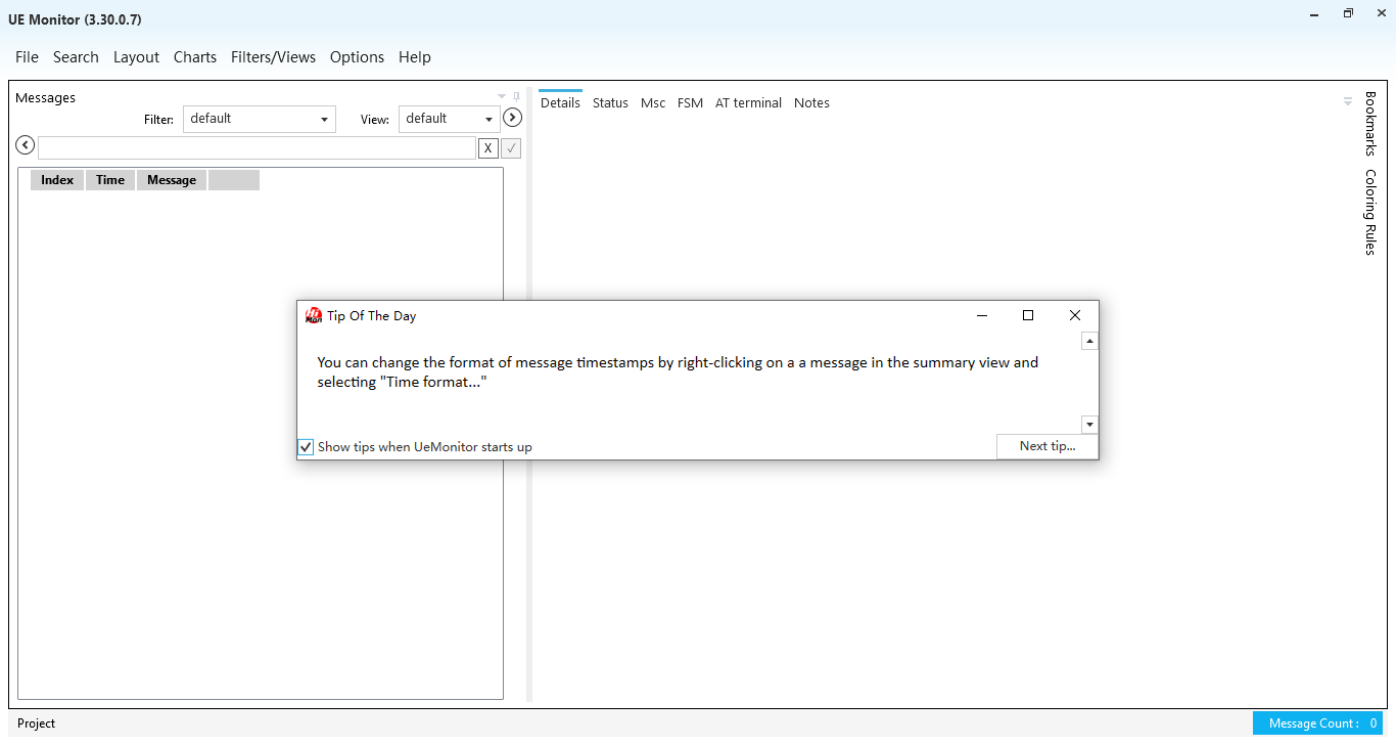
Before installing HiStudio, you need to install "Microsoft .NET Framework" (4.7.2 or later version, which can be downloaded online) on the PC; Or install setup.exe in the downloaded file.

三、UEMonitor 连接 (Connection)

通过上述图标启动 UEMonitor, 随后初始启动显示如下图窗口, 直接关闭弹窗即可;

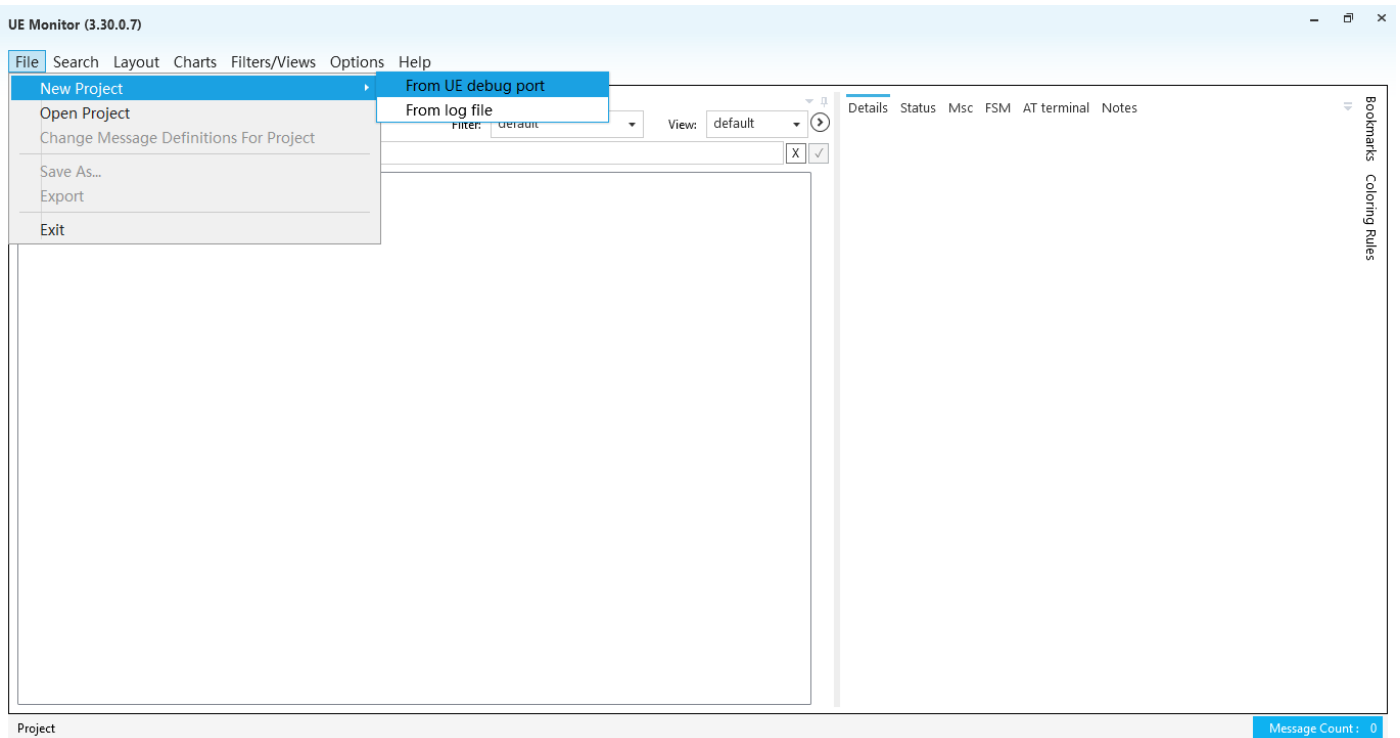
Start UEMonitor through the above icon, and then the following window is displayed after initial startup. You can directly

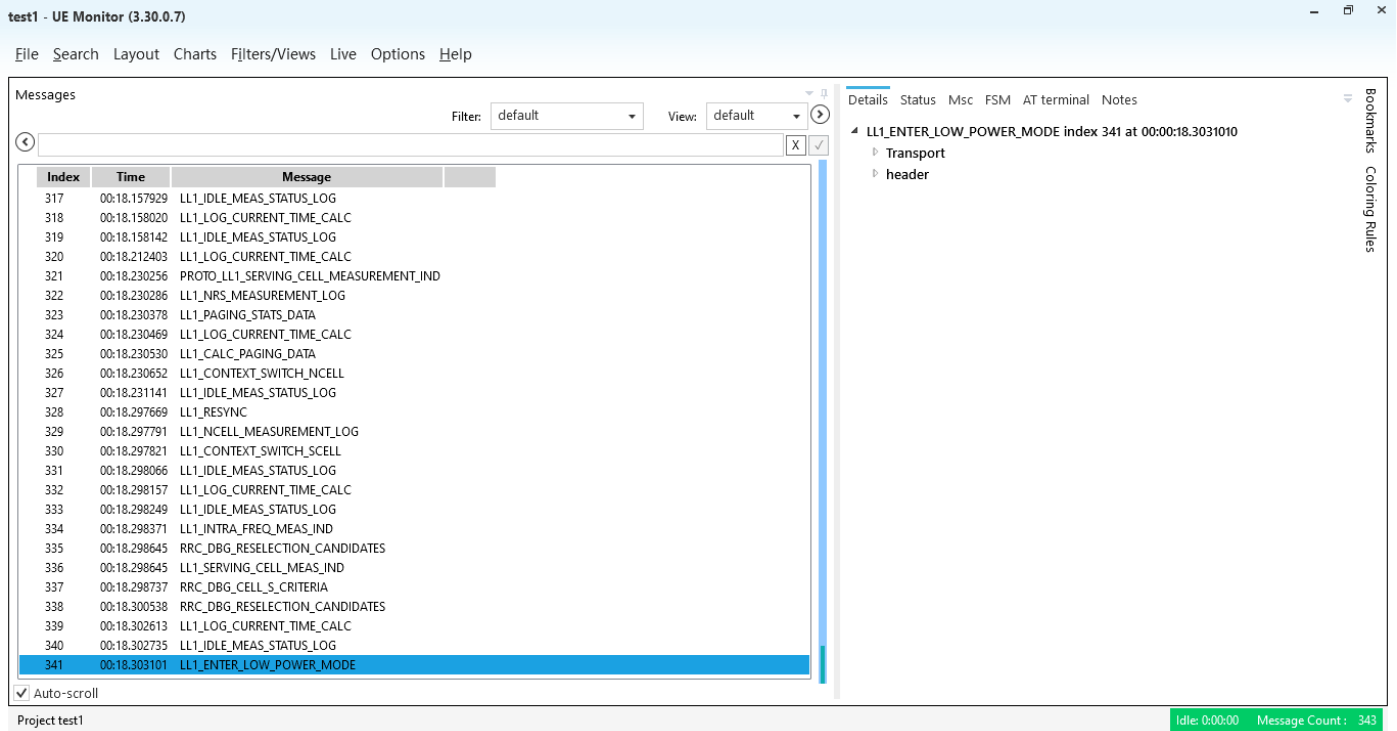
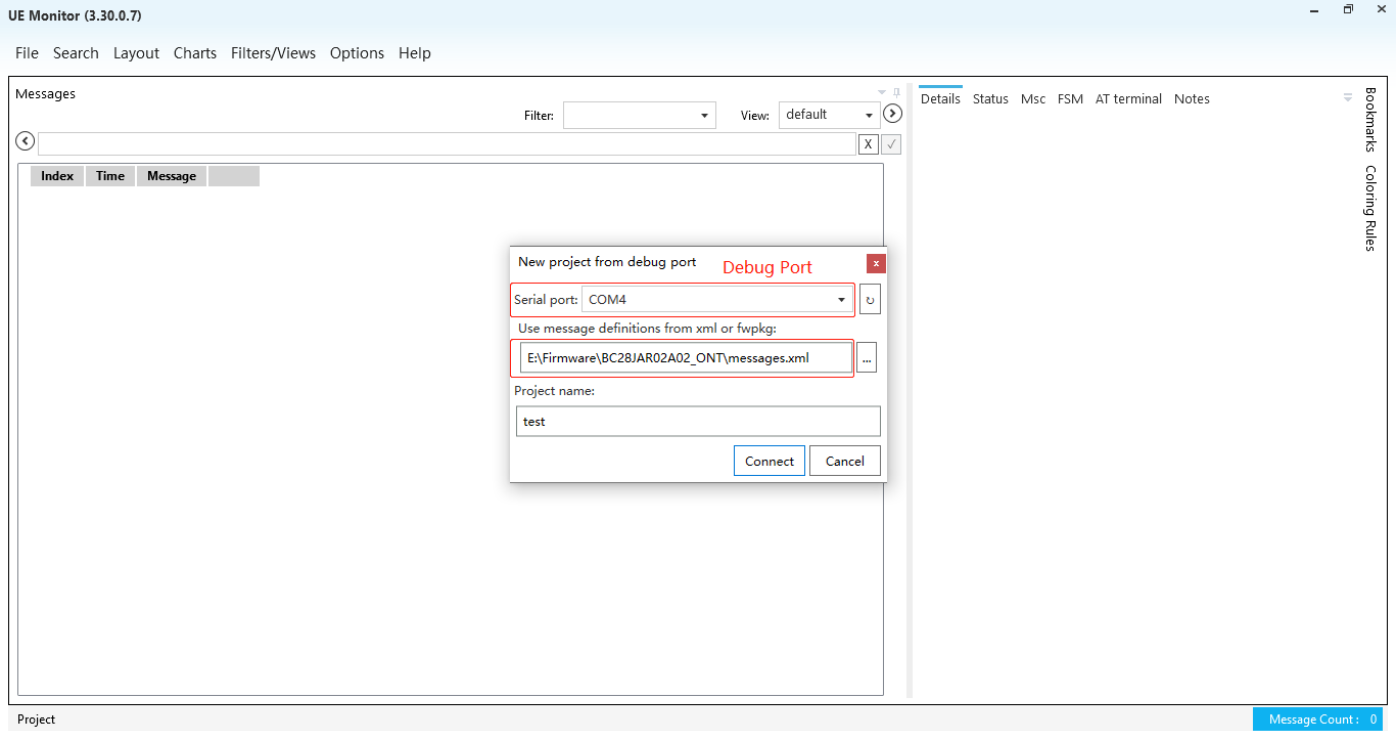
close the popup window;



通过菜单栏中“File→New Project→From UE debug port”,选择 Debug 端口，并导入对应模组固件版本中的.xml/.fwpkg 文件；同时也可以根据需要创建对应测试项目名称，如下图所示；

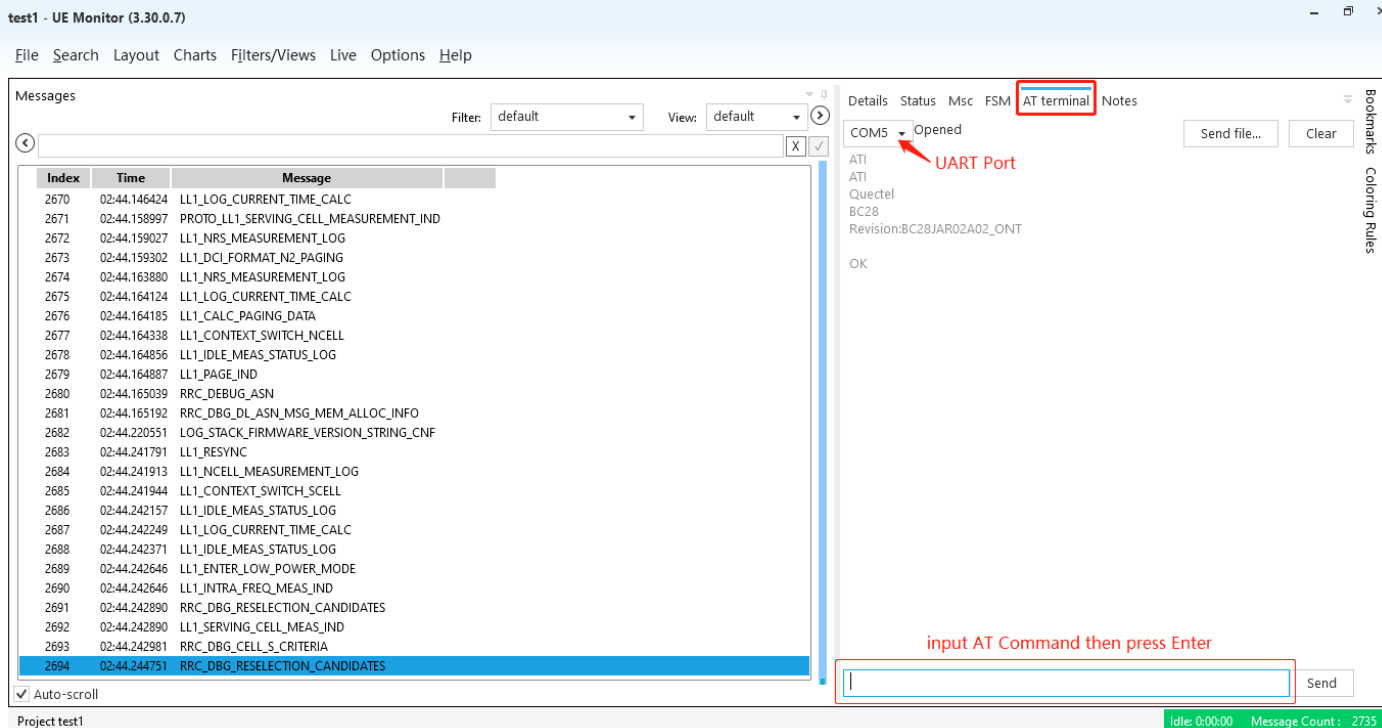
On the menu bar "File→New Project→From UE Debug Port", select the debug port and import the.xml/.fwpkg File in the corresponding module firmware version. At the same time, you can also create the corresponding test project name as required, as shown below.





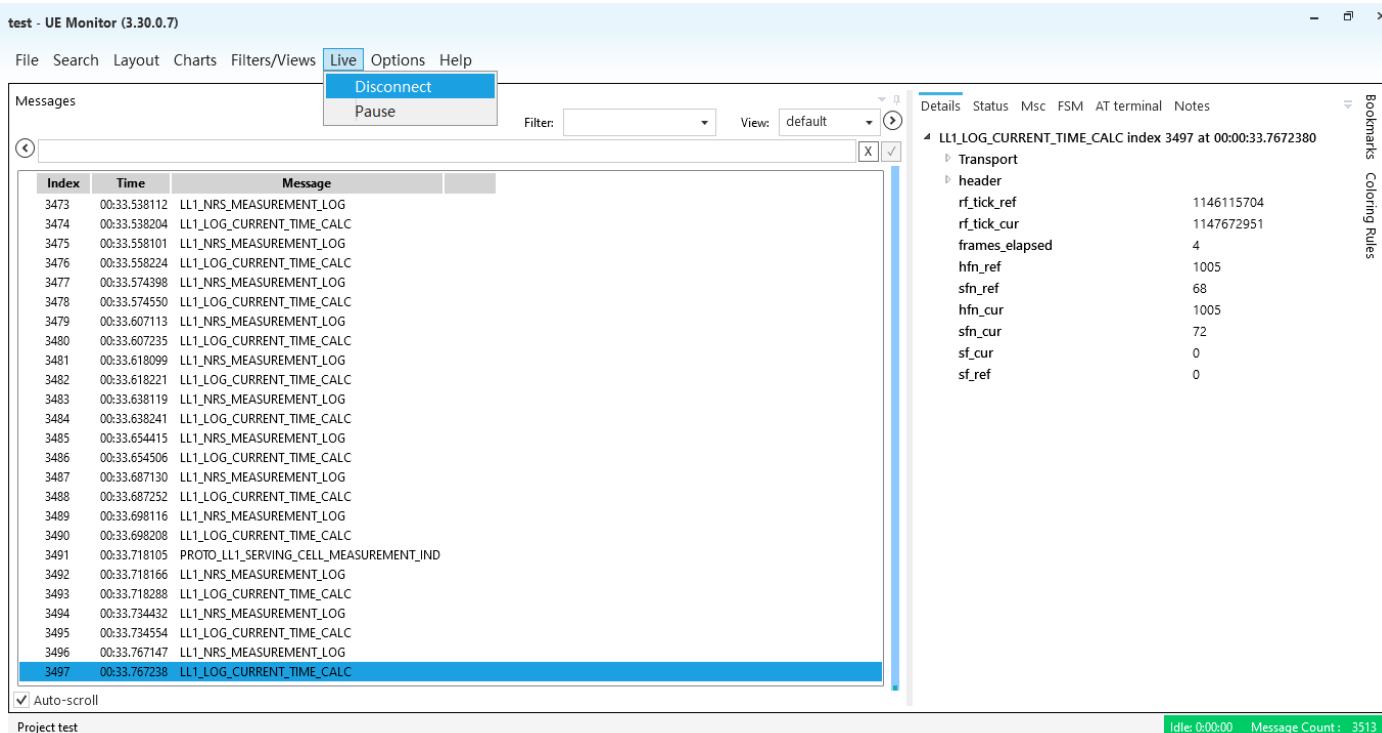
UEMonitor 也支持 AT 串口发送指令进行相关同步调试，如下图所示；

UEMonitor also supports AT serial port to send commands for relevant synchronous debugging, as shown below.



通过菜单栏中“Live→Disconnect/Pause”断开设备连接或停止，如下图所示；

By "Live→Disconnect/Pause" in the menu bar to disconnect or stop the device, as shown below.



四、日志保存 (Save Log)

4.1 自动保存(Automatically Save)

UEMonitor 支持自动保存，获取的 LOG 将自动保存在“我的文档\UeMonitor\Projects”中 (C:\Users\xxx

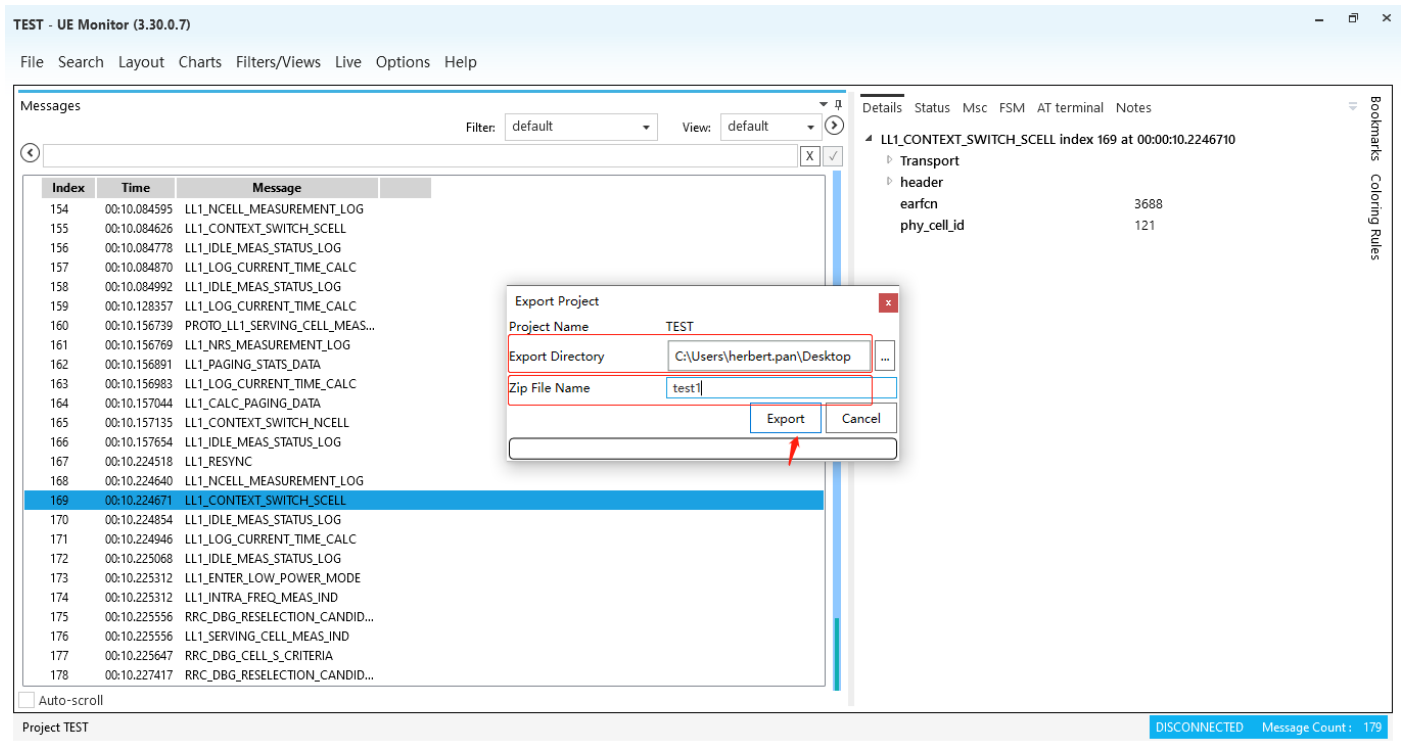
\Documents\UeMonitor\Projects)

UEMonitor supports automatic saving, The obtained logs are automatically saved in the "C:\Users\ XXX \Documents\ UEMonitor \Projects".

4.2 手动保存(Manual save)

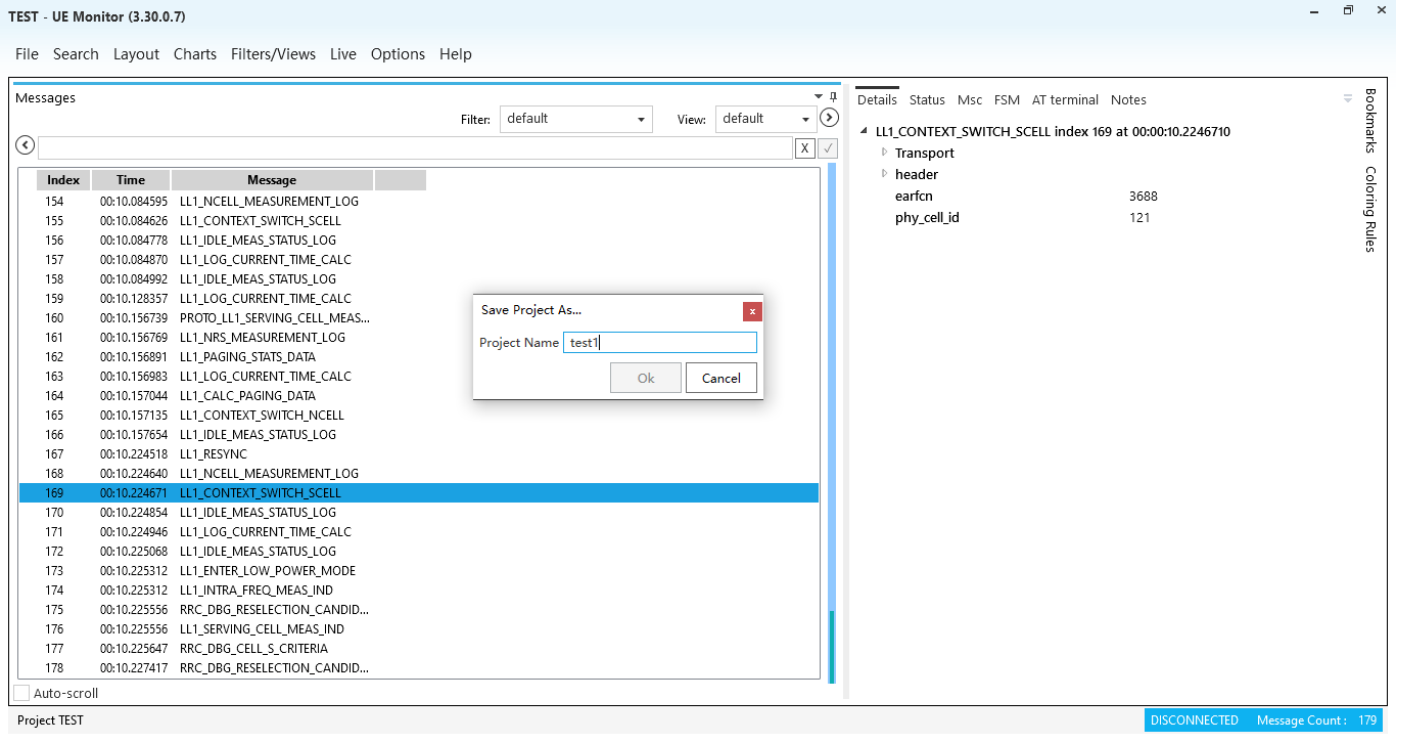
也可以通过“File→Export”在弹窗中选择导出路径和保存压缩文件名称即可，如下图所示；

You can also select the Export path and the name of the compressed File in the popup window from the menu bar "File→Export", as shown below.



如果通过“File→Save As”并填写完成测试项目名称后， Log 仍然保存在“我的文档\UeMonitor\Projects”中(C:\Users\xxx \Documents\UeMonitor\Projects)

If you use the menu bar "File→Save As" and fill in the name of the test project, the Log is still saved in “C:\Users\ XXX \Documents\UeMonitor\Projects”.

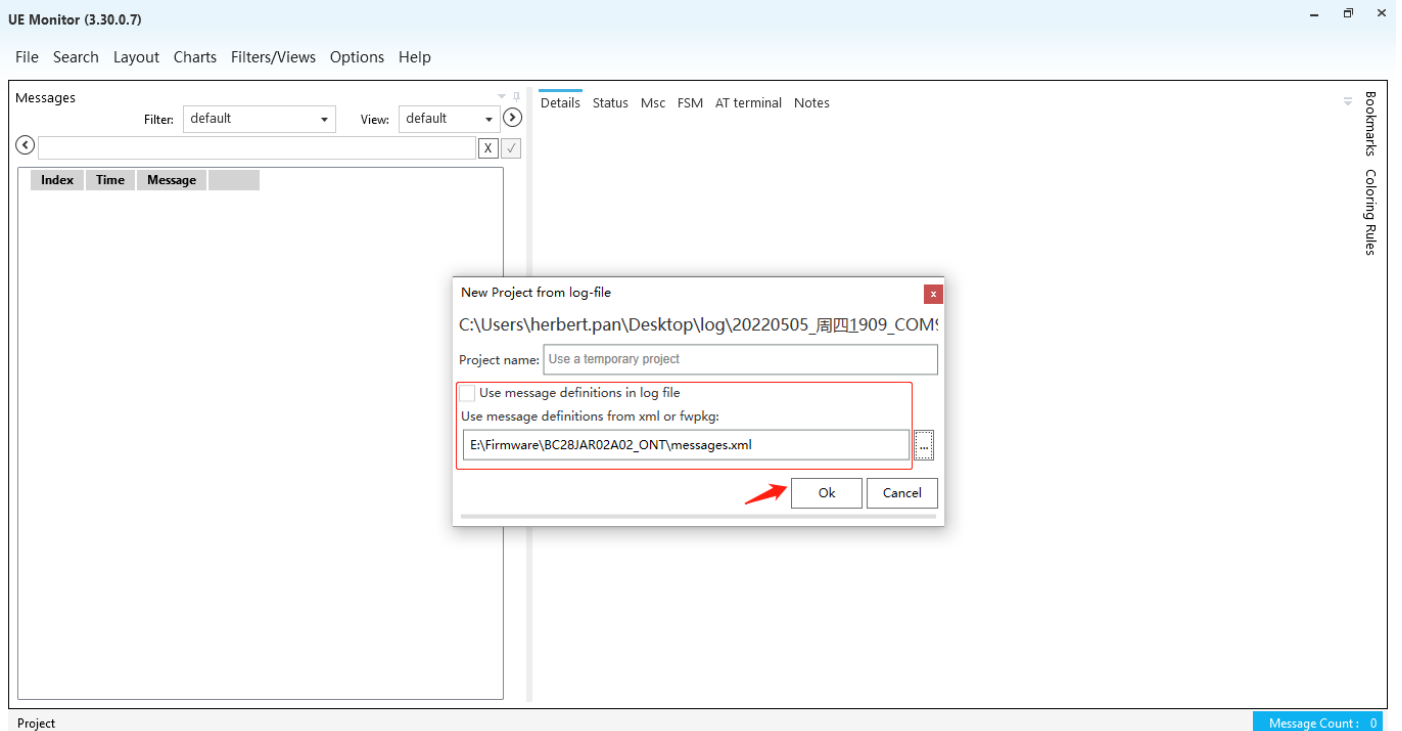
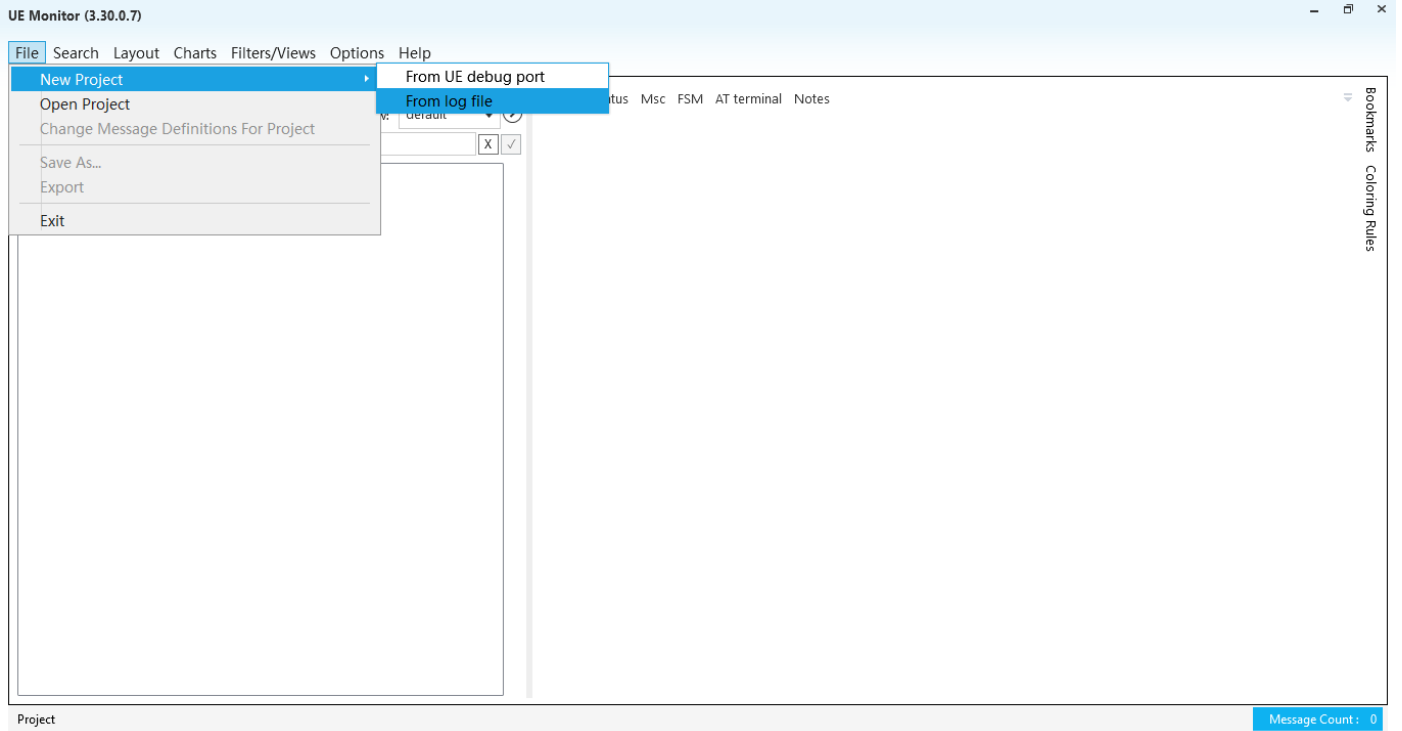


五、常见分析应用 (Common Analytical Application)

5.1 LOG 导入(Import Log)

直接双击抓取的 Log 文件中的 raw.uedl 文件即可，或通过 UEMonitor 菜单栏“File→From log file”导入待分析 Log 文件中的 raw.uedl 文件，如下图所示；如果出现解析错误，需要变更.xml 文件，也可以通过该弹窗导入对应固件版本的.xml 文件进行解析；或通过菜单栏“File→Change Message Definitions For Project”导入对应的.xml 文件；

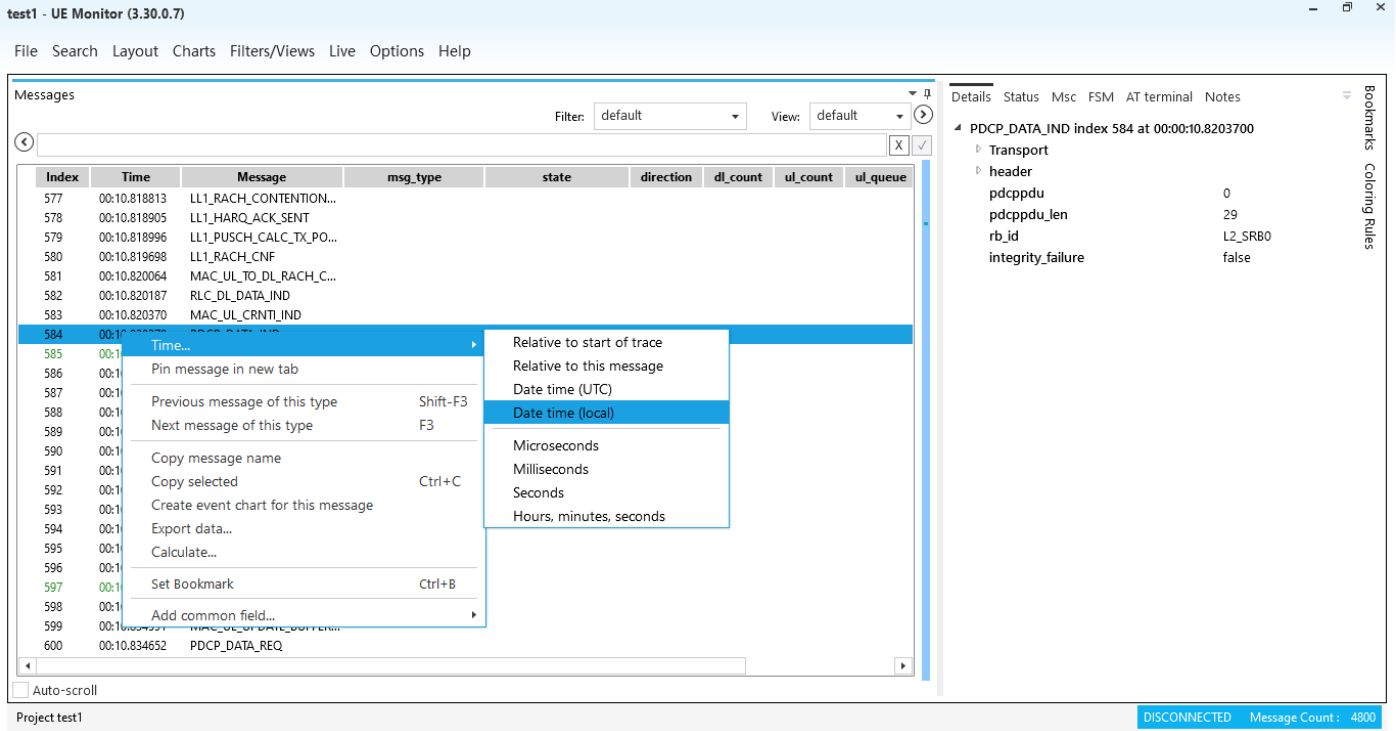
Directly double-click the raw.uedl File in the captured Log File, or import the raw.uedl File in the Log File to be analyzed through the UEMonitor menu bar "File→From Log File", as shown below. If parsing errors occur and you need to change the. XML file, you can also import the. XML file of the corresponding firmware version through the pop-up window for parsing. Or import the corresponding.xml File from the menu bar "File→Change Message Definitions For Project".



5.2 时间参考系(Time Reference System)

如下图所示，在主消息窗口，右击，选择“Time”，可以变换不同的时间参考系；

As shown below, in the main message window, right click and select "Time" to change different Time reference systems;

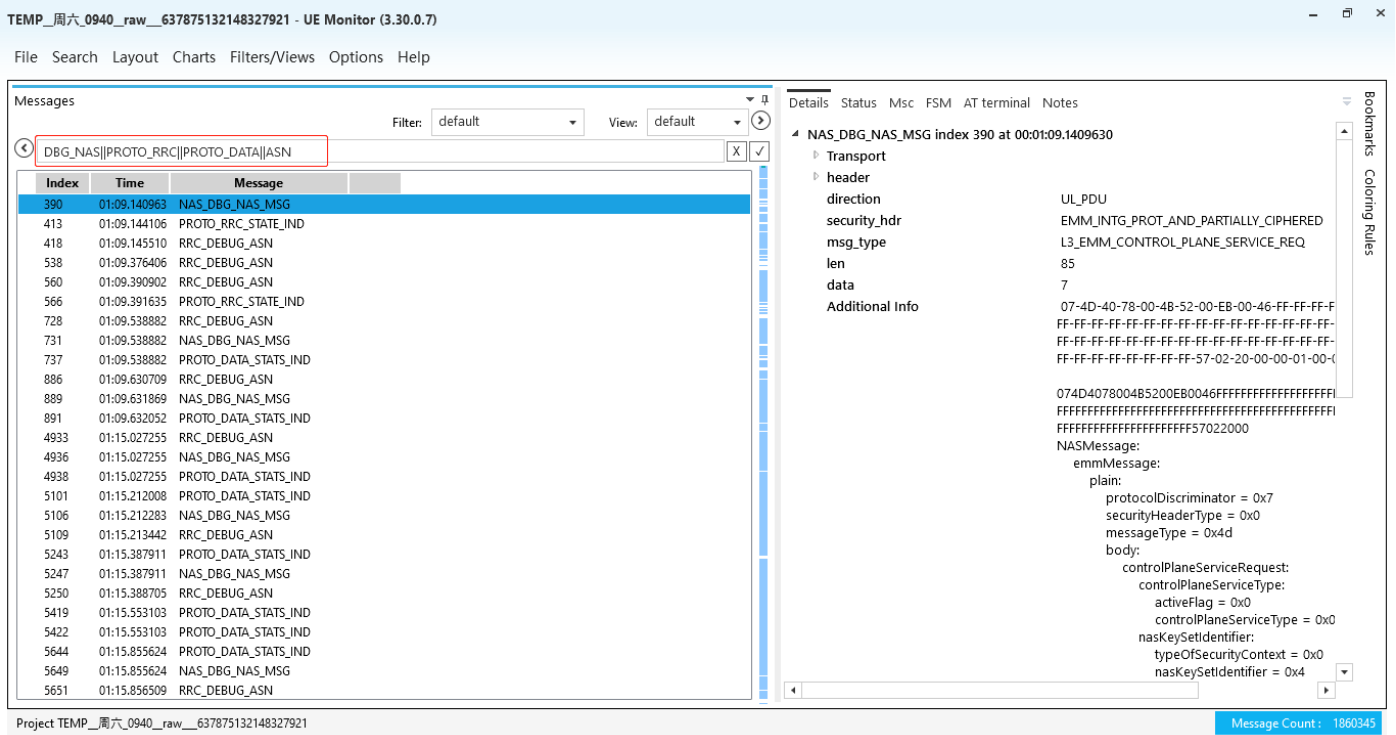


5.3 LOG 过滤(Filter Log)

1) 关键字过滤(By Keyword):

如下图所示，在关键字输入窗口内输入关键字后，UEMonitor 自动过滤和显示，同时支持双竖线“||”正则式过滤；

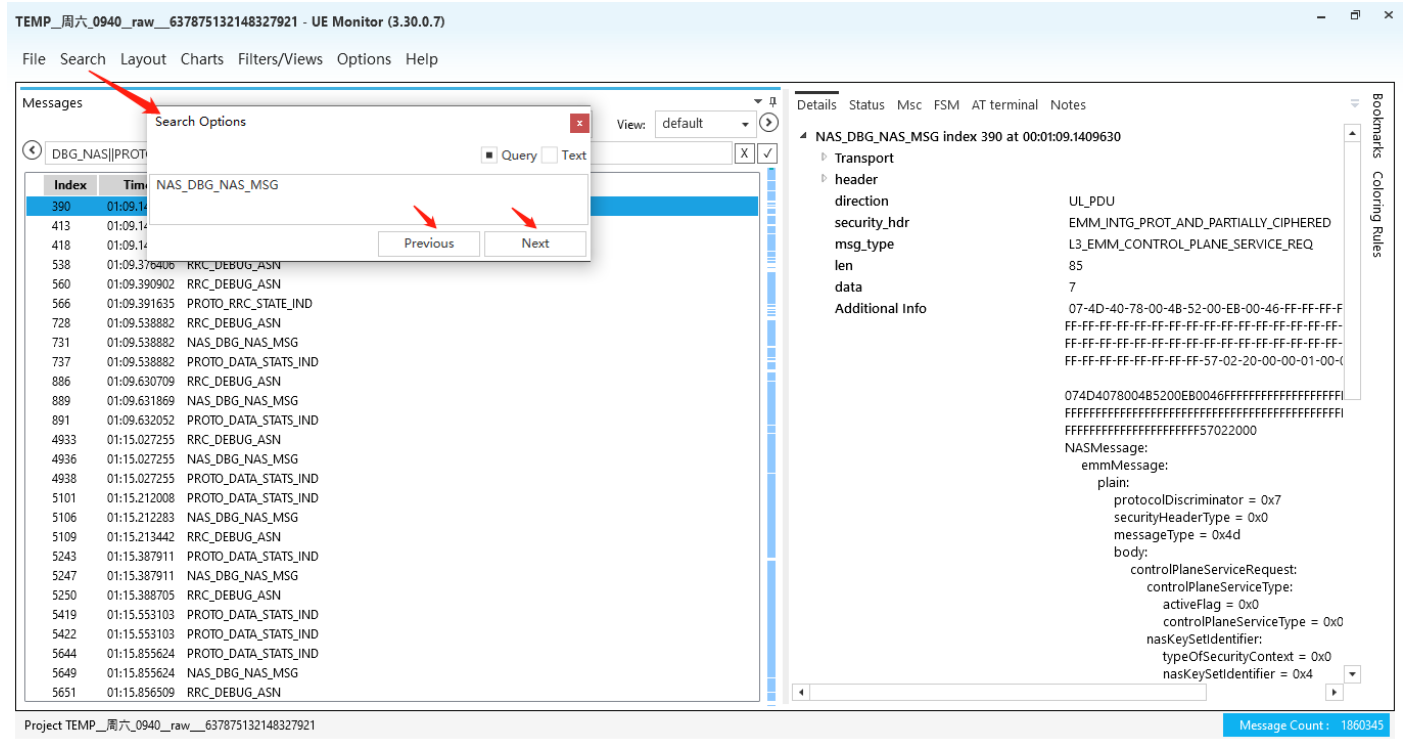
As shown below, after the input window input keywords, UEMonitor automatic filtering and display, at the same time support double vertical bar "||" regular type filter;



2) 查找(Find):

如下图所示，也可以通过菜单栏“Search→Find” 在弹窗中输入查询消息，可以向前/向后查询；

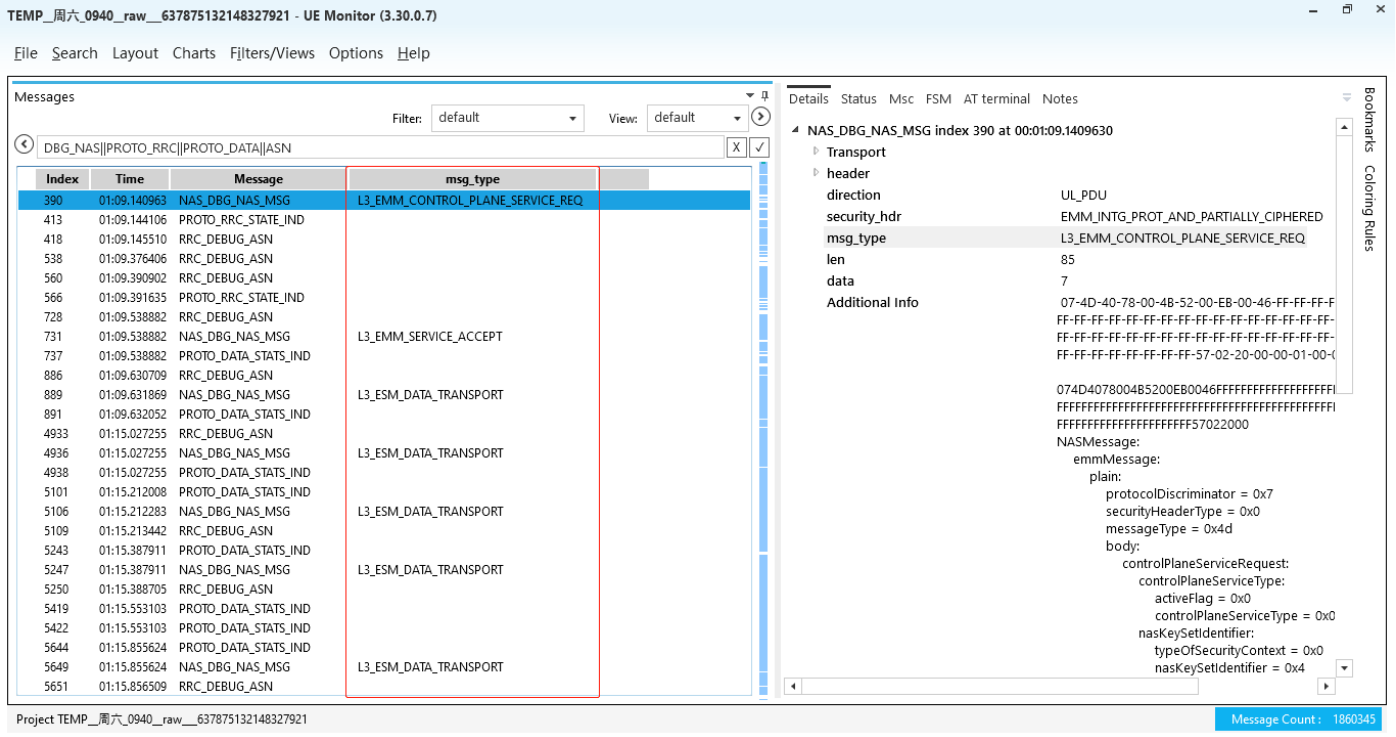
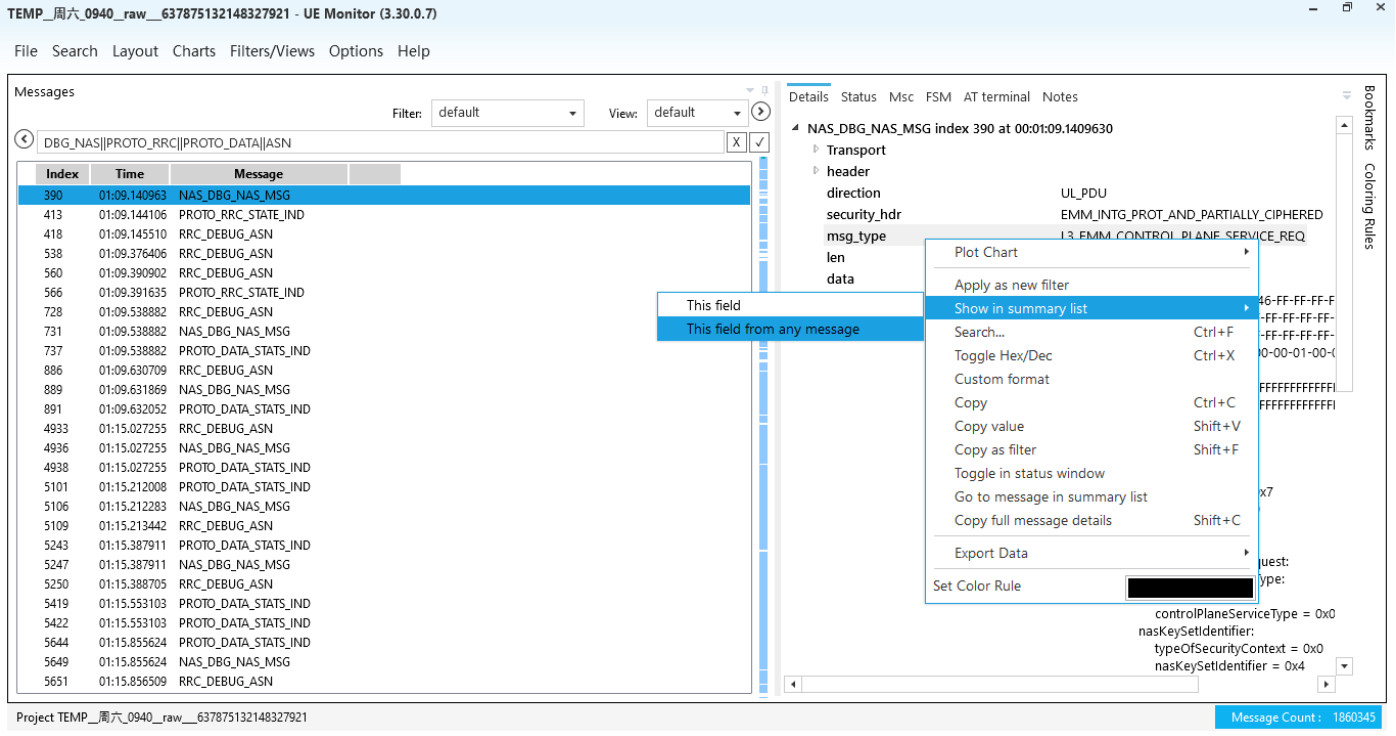
As shown below, you can also enter the query message in the popup window through the menu bar "Search→Find" to Search forward/backward;



5.4 增加消息条目(Add Item)

如下图所示，在右侧窗口 Details 消息中，选择所要添加至主窗口的消息，右击，在弹窗中选择“Show in summary list →This field from any message” 即可；

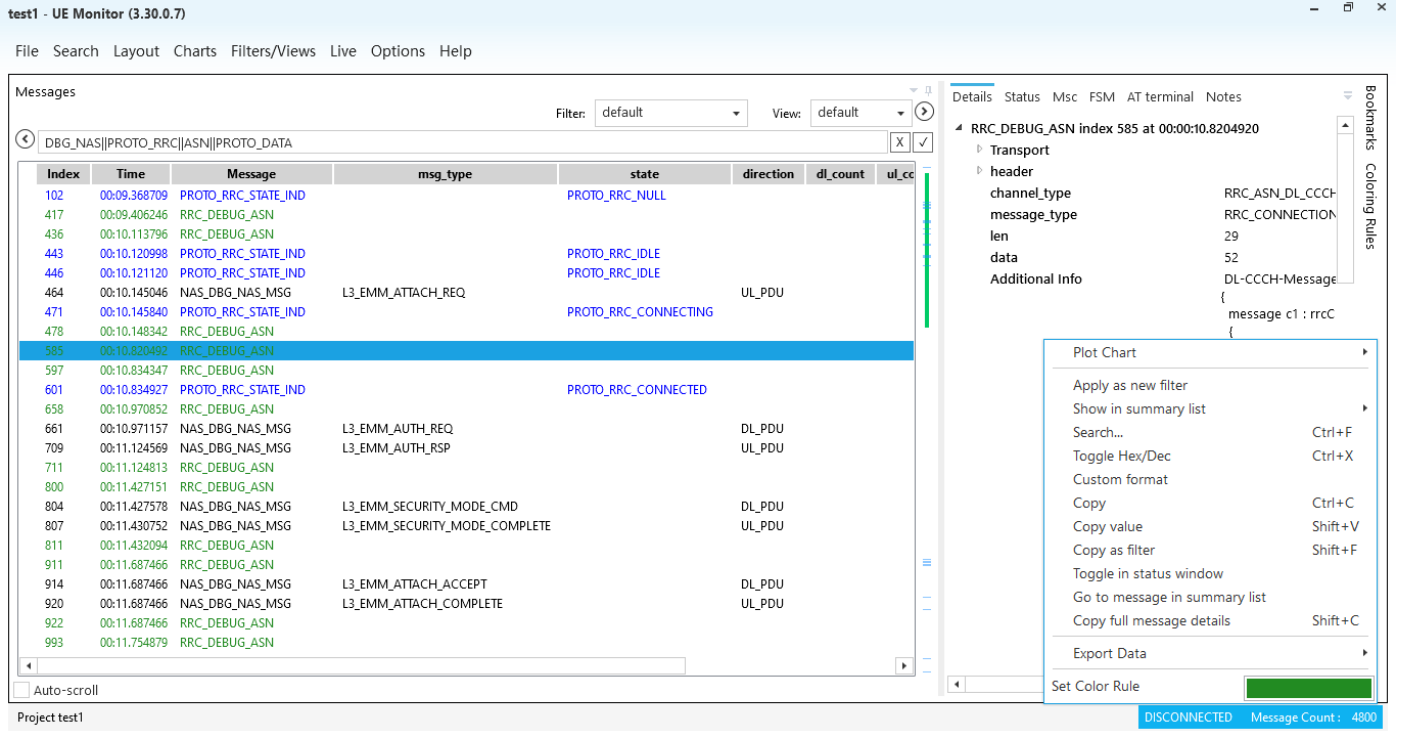
As shown in the figure below, in the Details message of the right window, select the message to be added to the main window, right click, and select "Show in Summary list→This field from any message" in the pop-up window.



5.5 消息着色(Color the Message)

如下图所示，在右侧 Details 消息窗口空白处，右击，在弹窗中选择“Show in summary list→Set Color Rule”，并选择适合的颜色，可以对不同类型 message 消息进行着色；

As shown below, right click in the blank area of the right Details message window, select "Show in Summary List →Set Color Rule" in the popup window, and select the appropriate Color to Color different types of message.



5.6 常用过滤关键字(Common Filtering Keyword)

NAS message	DBG_NAS ASN
Search Network	BOOT MAPPING SCAN EARFCN S_C Suitable
DATA	PROTO_DATA PDCP_DATA ASN APPLICATION DBG_N PDCP_DATA
ServingCell	Serving_cell
SI	MIB SIB ASN