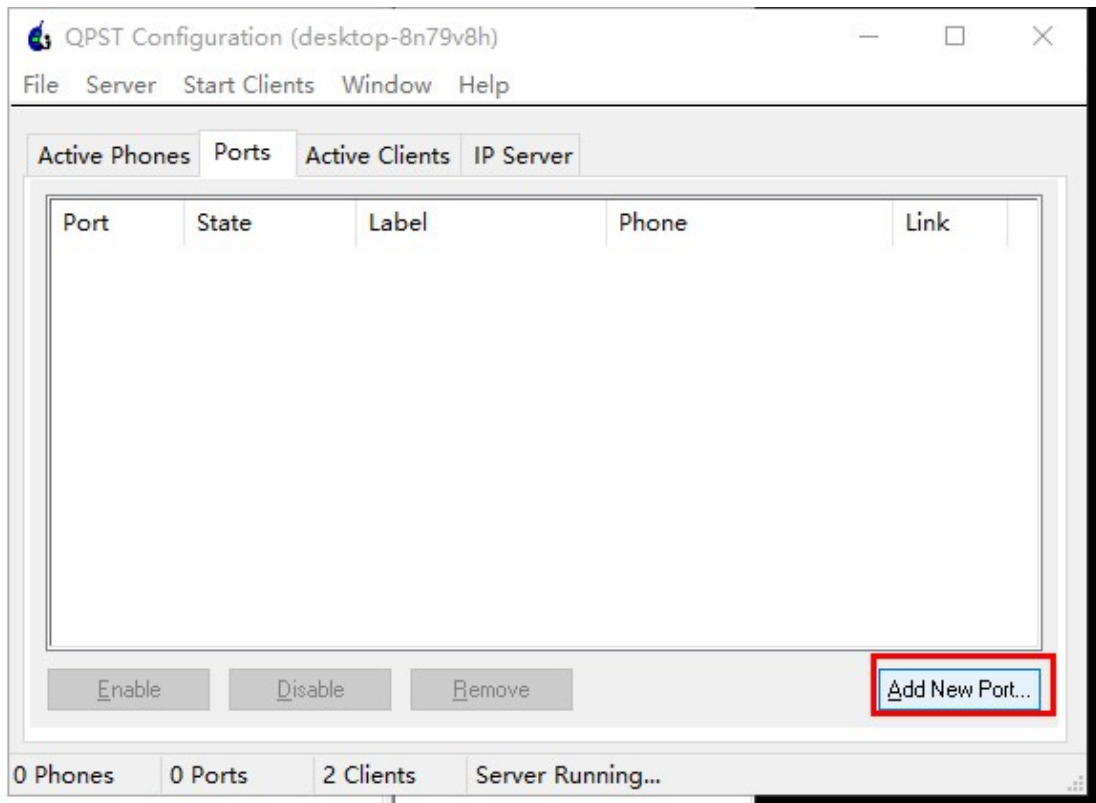
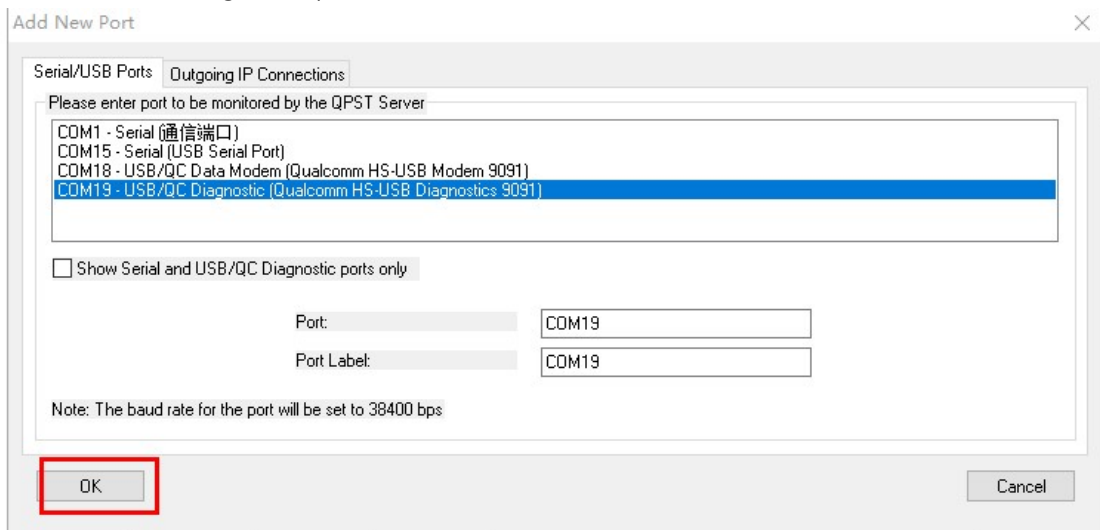


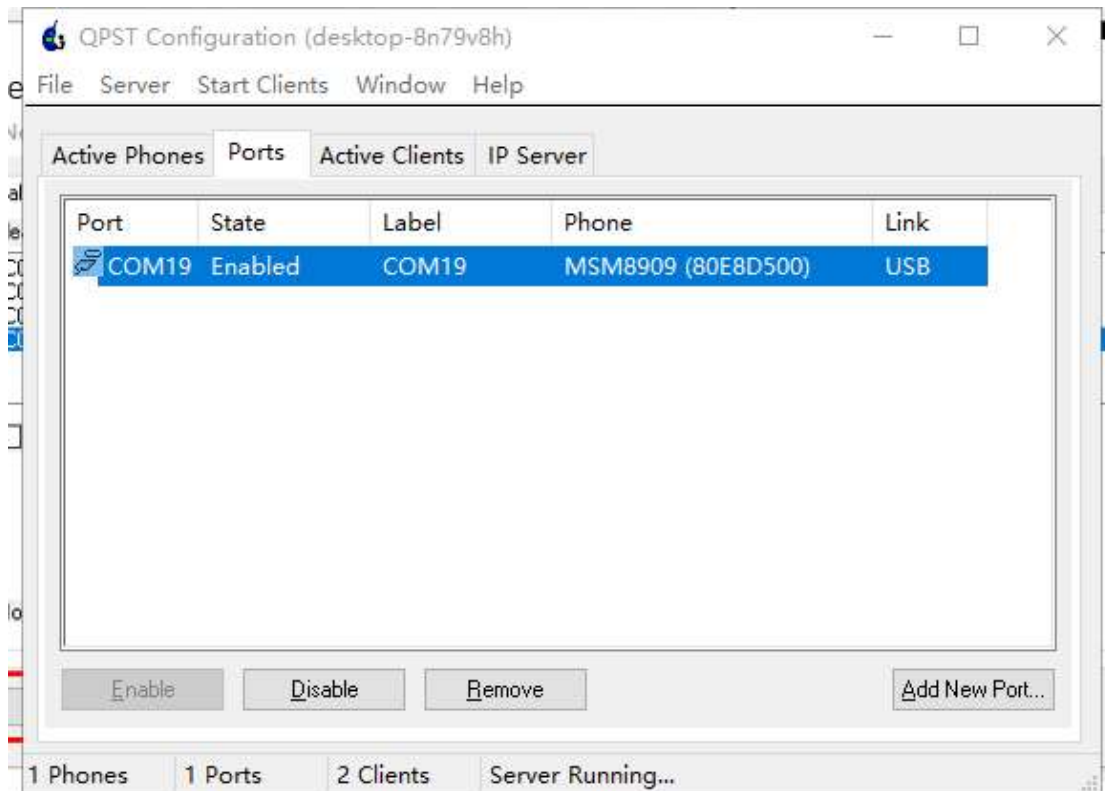
After install QPST and QXDM tool. We need activate the QXDM tool by our account, please provide teamviewer ID and PWD, I can input our account remotely.

1. Add new port in QPST configuration:

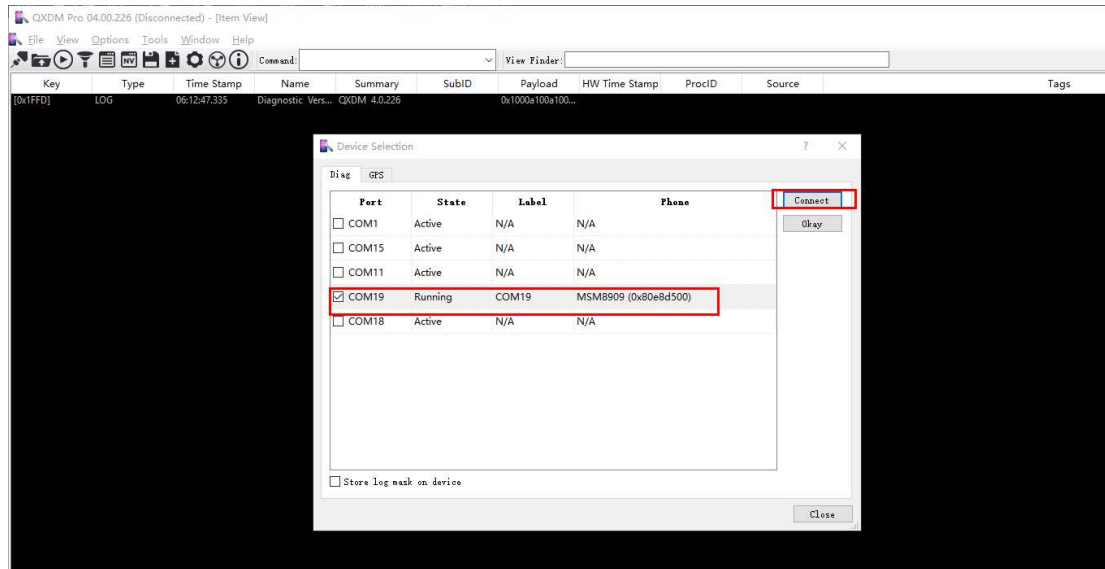


2. Select USB Diagnostic port:

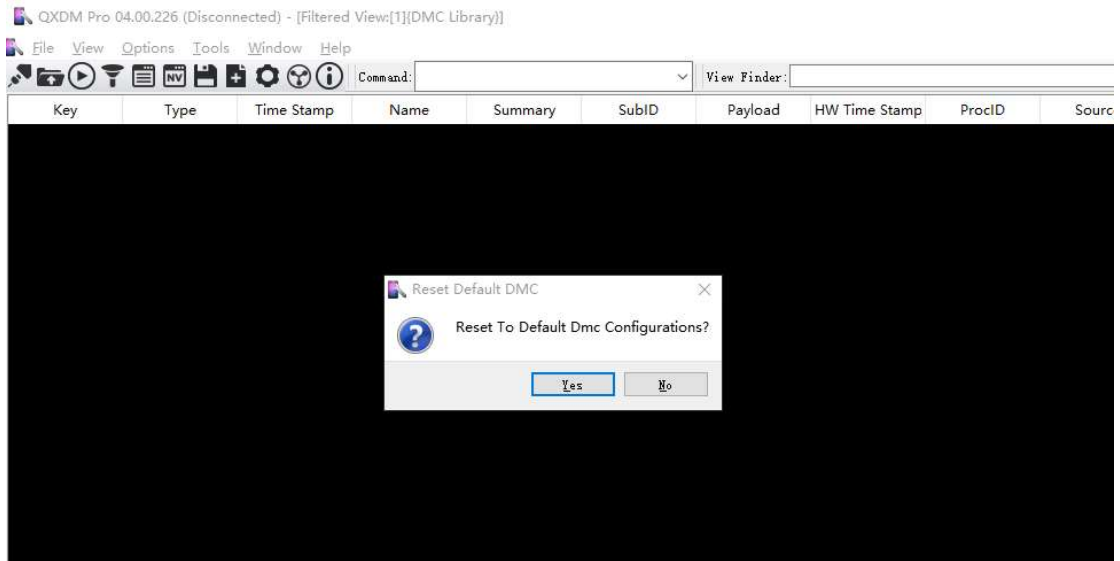




3. Options->Communications, select the same com and connect:



4. Open QXDM tool, file-> load default configuration:



5. Click View→Common →Item View (F11)
Then please send AT+CFUN=0, AT+CFUN=1.
Make sure your SIM supports VOLTE, please test it in your mobile phone first, and then send the below AT commands:
AT+CSUB/AT+ICCID/AT+CIMI/AT+COPS?/AT+QMBNCFG="list"/AT+QMBNCFG="Aut
ose1"/AT+CGDCONT?AT+CGPADDR/ATDxxx;(make a VOLTE call)
/AT+COPS?

After test, please disconnect the USB DM port in Options->Communications, file-> save items, and keep isf log file and whole AT log to us.
6. At last, please click Help->Licensing-> deactivate to disable the license.