

# **EC2x&EG9x&EG25-G Series**

## **QuecOpen UART Forwarding**

### **Application Note**

**LTE Standard Module Series**

Rev. EC2x&EG9x&EG25-G\_Series\_QuecOpen\_UART\_Forwarding\_  
Application\_Note\_V1.0

Date: 2020-07-15

Status: Released

**Our aim is to provide customers with timely and comprehensive service. For any assistance, please contact our company headquarters:**

**Quectel Wireless Solutions Co., Ltd.**

Building 5, Shanghai Business Park Phase III (Area B), No.1016 Tianlin Road, Minhang District, Shanghai, China 200233

Tel: +86 21 5108 6236

Email: [info@quectel.com](mailto:info@quectel.com)

**Or our local office. For more information, please visit:**

<http://www.quectel.com/support/sales.htm>

**For technical support, or to report documentation errors, please visit:**

<http://www.quectel.com/support/technical.htm>

Or email to: [support@quectel.com](mailto:support@quectel.com)

## **GENERAL NOTES**

QUECTEL OFFERS THE INFORMATION AS A SERVICE TO ITS CUSTOMERS. THE INFORMATION PROVIDED IS BASED UPON CUSTOMERS' REQUIREMENTS. QUECTEL MAKES EVERY EFFORT TO ENSURE THE QUALITY OF THE INFORMATION IT MAKES AVAILABLE. QUECTEL DOES NOT MAKE ANY WARRANTY AS TO THE INFORMATION CONTAINED HEREIN, AND DOES NOT ACCEPT ANY LIABILITY FOR ANY INJURY, LOSS OR DAMAGE OF ANY KIND INCURRED BY USE OF OR RELIANCE UPON THE INFORMATION. ALL INFORMATION SUPPLIED HEREIN IS SUBJECT TO CHANGE WITHOUT PRIOR NOTICE.

## **COPYRIGHT**

THE INFORMATION CONTAINED HERE IS PROPRIETARY TECHNICAL INFORMATION OF QUECTEL WIRELESS SOLUTIONS CO., LTD. TRANSMITTING, REPRODUCTION, DISSEMINATION AND EDITING OF THIS DOCUMENT AS WELL AS UTILIZATION OF THE CONTENT WITHOUT PERMISSION ARE FORBIDDEN. OFFENDERS WILL BE HELD LIABLE FOR PAYMENT OF DAMAGES. ALL RIGHTS ARE RESERVED IN THE EVENT OF A PATENT GRANT OR REGISTRATION OF A UTILITY MODEL OR DESIGN.

***Copyright © Quectel Wireless Solutions Co., Ltd. 2020. All rights reserved.***

# About the Document

## Revision History

Version	Date	Author	Description
1.0	2020-07-15	Tinker Sun	Initial

---

## Contents

About the Document .....	2
Contents .....	3
Figure Index .....	4
Table Index .....	5
<b>1 Introduction .....</b>	<b>6</b>
1.1. Applicable Modules .....	6
<b>2 Ports for UART Forwarding .....</b>	<b>7</b>
2.1. USB AT Port .....	7
2.2. Virtual SMD Port .....	8
<b>3 UART Forwarding Function Introduction .....</b>	<b>9</b>
3.1. Send/Receive AT Commands Over UART .....	9
3.1.1. Send/Receive AT Commands Over Main UART .....	9
3.1.2. Send/Receive AT Commands Over Debug UART .....	10
3.2. Output NMEA Data Over UART or USB NMEA Port .....	11
3.2.1. Output NMEA Data Over Main UART .....	11
3.2.2. Output NMEA Data Over Debug UART .....	12
3.2.3. Output NMEA Data via USB NMEA Port .....	13
<b>4 Appendix A References .....</b>	<b>15</b>

## Figure Index

Figure 1: View the USB Ports Enumerated Through the Device Manager in Windows.....	7
Figure 2: Open the USB AT Port in the Windows Through the QCOM Tool.....	7
Figure 3: Data Forwarding Between Main UART and SMD8 .....	10
Figure 4: Data Forwarding Between Debug UART and SMD8 .....	11
Figure 5: Data Forwarding Between Main UART and SMD7 .....	12
Figure 6: Data Forwarding Between Debug UART and SMD7 .....	13
Figure 7: Data Forwarding Between USB NMEA Port and SMD7 .....	14

## Table Index

Table 1: Applicable Modules.....	6
Table 2: Related Document.....	15
Table 3: Terms and Abbreviations .....	15

# 1 Introduction

Quectel LTE Standard EC2x&EG9x&EG25-G series modules support QuecOpen® solution. This document mainly introduces the UART forwarding function, which forwards data between the designated UART port and virtual port through Quectel modules, including sending and receiving AT commands and outputting NMEA data.

## 1.1. Applicable Modules

Table 1: Applicable Modules

Module Series	Module
EC2x series	EC25 series
	EC21 series
	EC20 R2.1
EG9x series	EG95 series
	EG91 series
EG25-G	EG25-G

# 2 Ports for UART Forwarding

EC2x&EG9x&EG25-G series QuecOpen modules provide USB AT port and SMD virtual port for sending and receiving AT commands, and USB NMEA port and SMD virtual port for transmitting NMEA data. For more details, please refer to **Chapter 3**.

## 2.1. USB AT Port

When USB is connected to the PC, the USB AT port, COM27 as shown below, will be listed in the device manager:

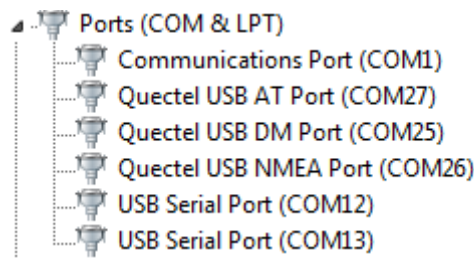


Figure 1: View the USB Ports Enumerated Through the Device Manager in Windows

The QCOM tool in Windows can open the USB AT port and send/receive AT commands, as shown in the following figure:

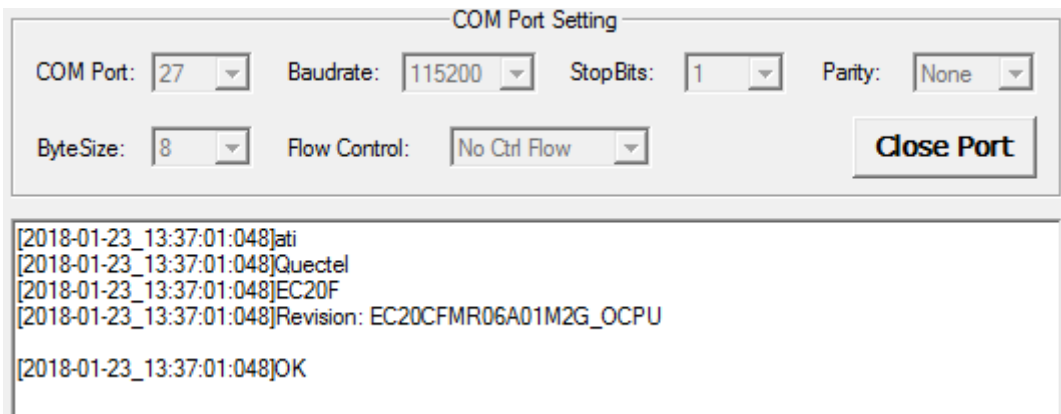


Figure 2: Open the USB AT Port in the Windows Through the QCOM Tool



**NOTE**

COM13 needs to be connected to Main UART, and COM12 needs to be connected to Debug UART.

## 2.2. Virtual SMD Port

SMD virtual ports include SMD7, SMD8, SMD9, etc.

Taking the SMD8 virtual port as an example, the device file name is /dev/smd8, as shown in the following figure. The device file names of other virtual port can be deduced by analogy.

```
root@mcm9607-perf:/# ls /dev/smd
smd21          smd7          smd_pkt_loopback
smd22          smd8          smdcnt10
smd36          smd9          smdcnt18
```

The SMD virtual port can be used to send AT commands in users' internal codes. The following figure also uses SMD8 as an example.

```
root@mcm9607-perf:/# cat /dev/smd8 &
root@mcm9607-perf:/# echo -e "ATI\r\n" > /dev/smd8
root@mcm9607-perf:/# ATI
Quectel
EC20F
Revision: EC20CFMR06A01M2G_OCPU
OK
```

**NOTE**

A virtual port cannot perform AT command sending/receiving and NMEA data output at the same time. Therefore, in order to avoid users performing AT command sending/receiving and NMEA data output at the same time, **Chapters 3.1** and **3.2** take SMD8 and SMD7 as examples respectively to introduce the UART forwarding function.

# 3 UART Forwarding Function

## Introduction

For terminal products, the USB AT port is usually not used, and the main UART or the debug UART can be used to send and receive AT commands; and the main UART, debug UART, or USB NMEA port can be used to output NMEA data.

### 3.1. Send/Receive AT Commands Over UART

Execute the following command to view the help information of application quectel-uart-ddp:

```
quectel-uart-ddp -help
```

```
root@mdm9607-perf:/# quectel-uart-ddp -help
Usage:
  -help : print usage
  -b    : set baudrate, i.e. 115200
  -d    : set data bits, i.e. 8
  -s    : set stop bits, i.e. 1
  -p    : set parity, i.e. 0
  -f    : set flow ctrl, i.e. 1
  -uart : main: /dev/ttyHS0, dbg:/dev/ttyHSL0
  -smd  : /dev/smd7/8/9
  -flag : |0x04, none block
root@mdm9607-perf:/# █
```

#### 3.1.1. Send/Receive AT Commands Over Main UART

Execute the following command to forward data between main UART and SMD8:

```
quectel-uart-ddp -uart /dev/ttyHS0 -smd /dev/smd8
```

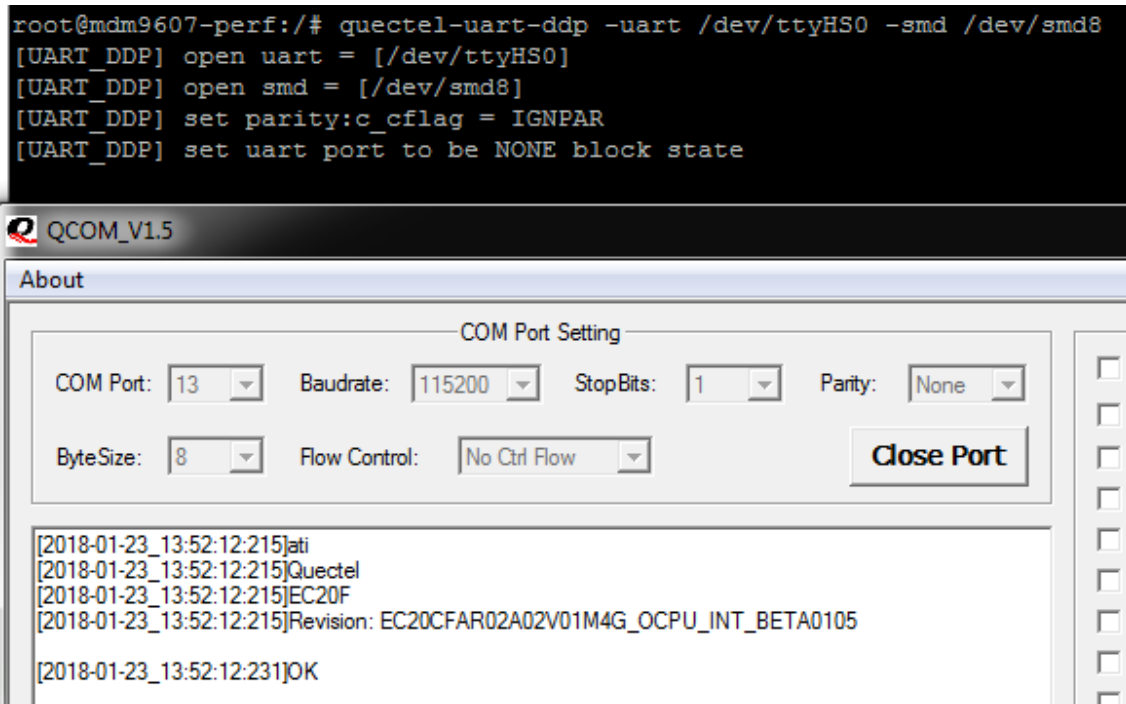


Figure 3: Data Forwarding Between Main UART and SMD8

### 3.1.2. Send/Receive AT Commands Over Debug UART

Execute the following command to forward data between debug UART and SMD8:

```
quectel-uart-ddp -uart /dev/ttyHSL0 -smd /dev/smd8
```

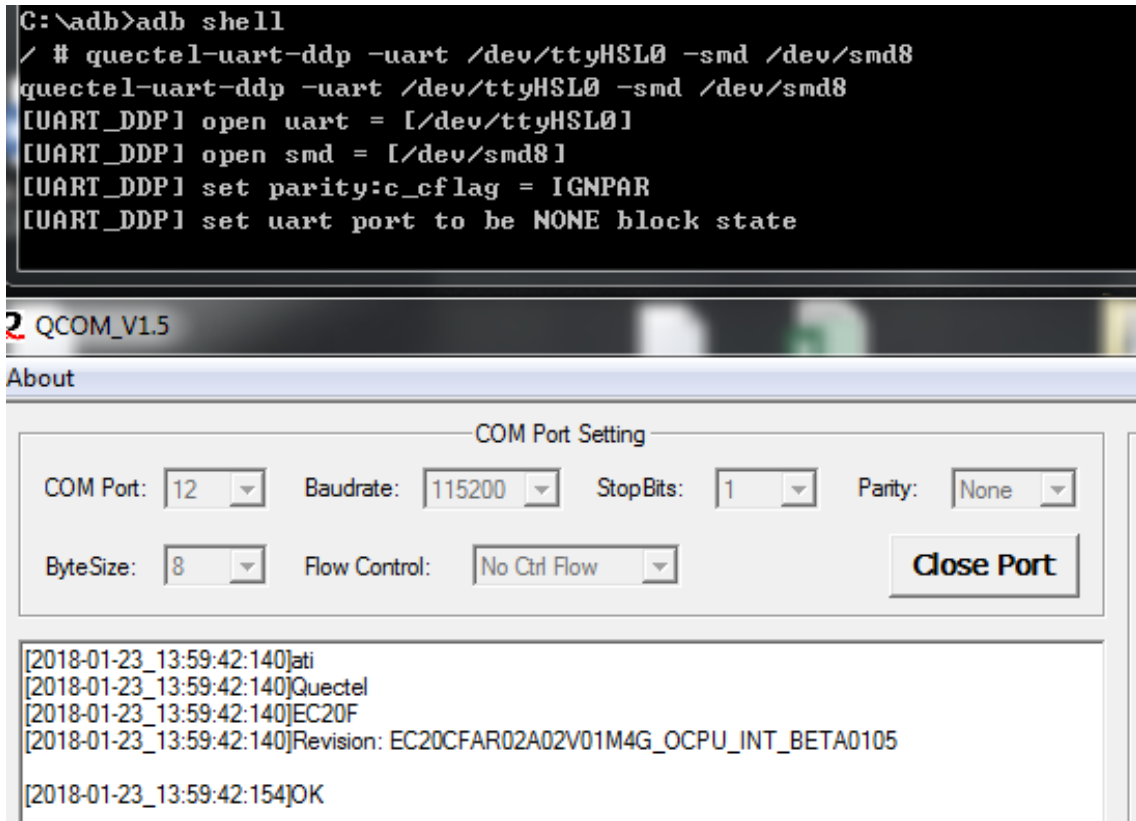


Figure 4: Data Forwarding Between Debug UART and SMD8

## 3.2. Output NMEA Data Over UART or USB NMEA Port

### 3.2.1. Output NMEA Data Over Main UART

Use the main serial port to output NMEA data, that is, set the NMEA data output function through the quectel-uart-ddp application.

Execute the following command to forward data between main UART and SMD7:

```
quectel-uart-ddp -uart /dev/ttyHS0 -smd /dev/smd7
```

Then after sending **AT+QGPS=1** to enable the GNSS function, you can output NMEA data through the main UART port COM13, as shown in the following figure. For more details of the AT command, please refer to [document \[1\]](#).

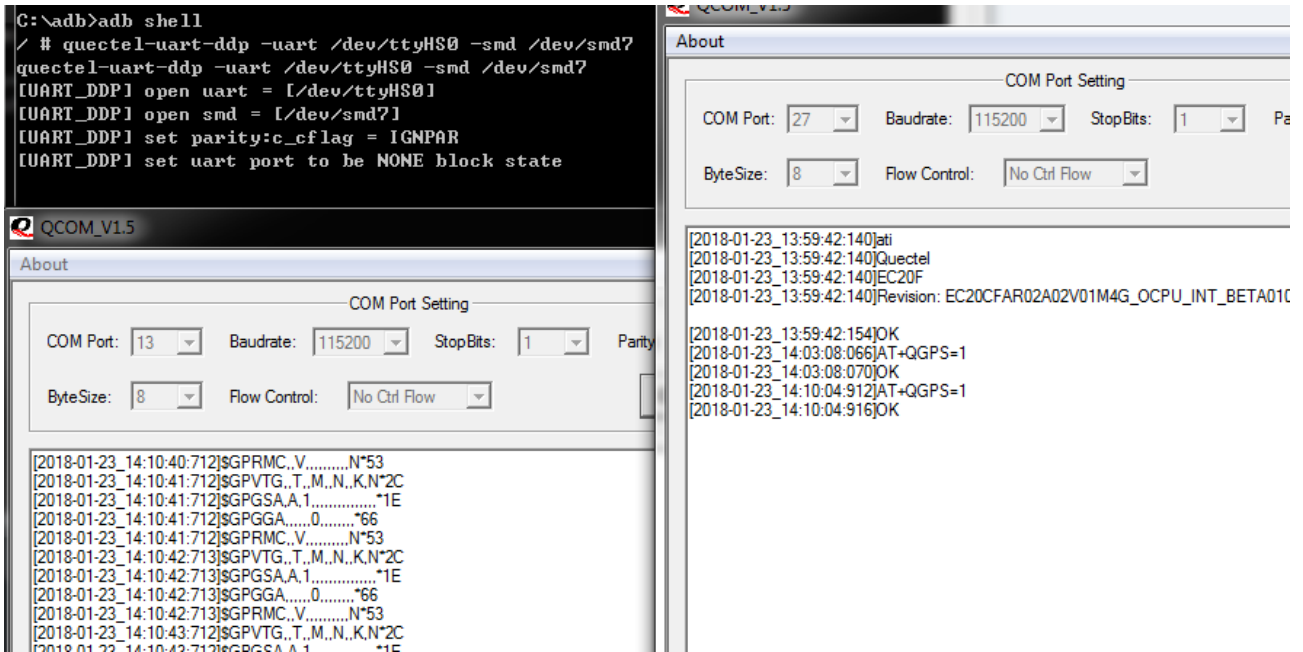


Figure 5: Data Forwarding Between Main UART and SMD7

### 3.2.2. Output NMEA Data Over Debug UART

Execute the following command to forward data between debug UART and SMD7:

```
quectel-uart-ddp -uart /dev/ttyHSL0 -smd /dev/smd7
```

Then after sending **AT+QGPS=1** to enable the GNSS function, you can output NMEA data through the debug UART port COM12, as shown in the following figure.

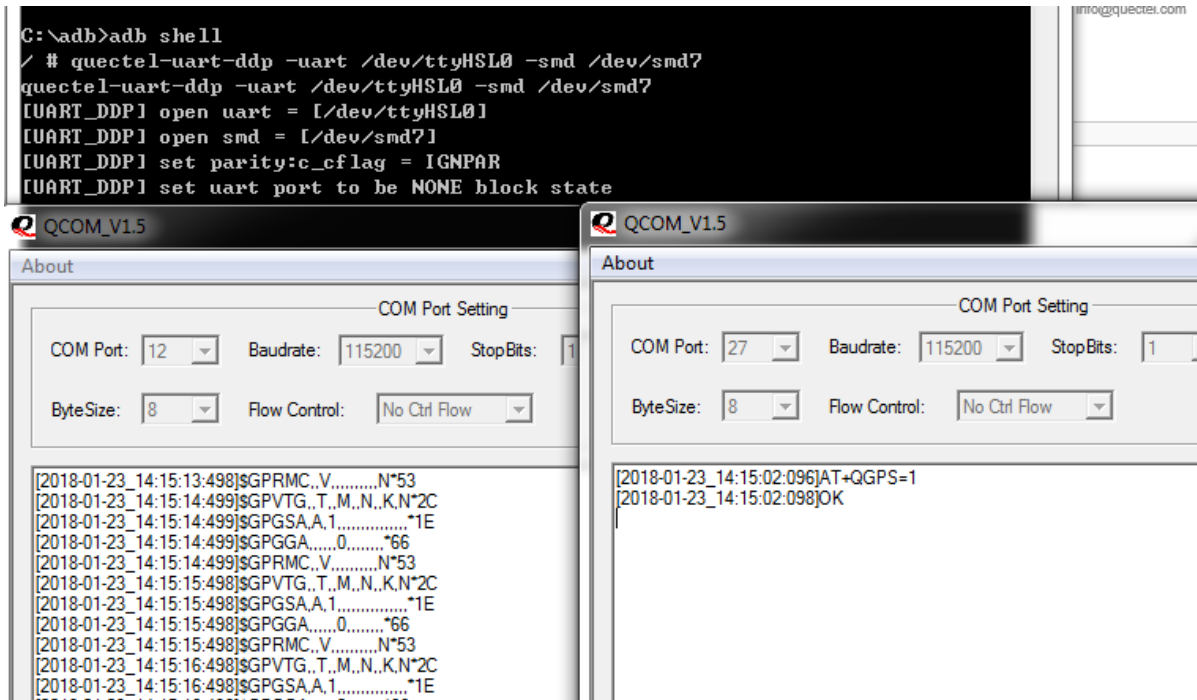


Figure 6: Data Forwarding Between Debug UART and SMD7

### 3.2.3. Output NMEA Data via USB NMEA Port

Execute the following command to forward data between NMEA port COM26 and SMD7:

```
quectel-uart-ddp -uart /dev/ttyGS0 -smd /dev/smd7
```

Then after sending **AT+QGPS=1** to enable the GNSS function, you can output NMEA data through the USB NMEA port COM26, as shown in the following figure.

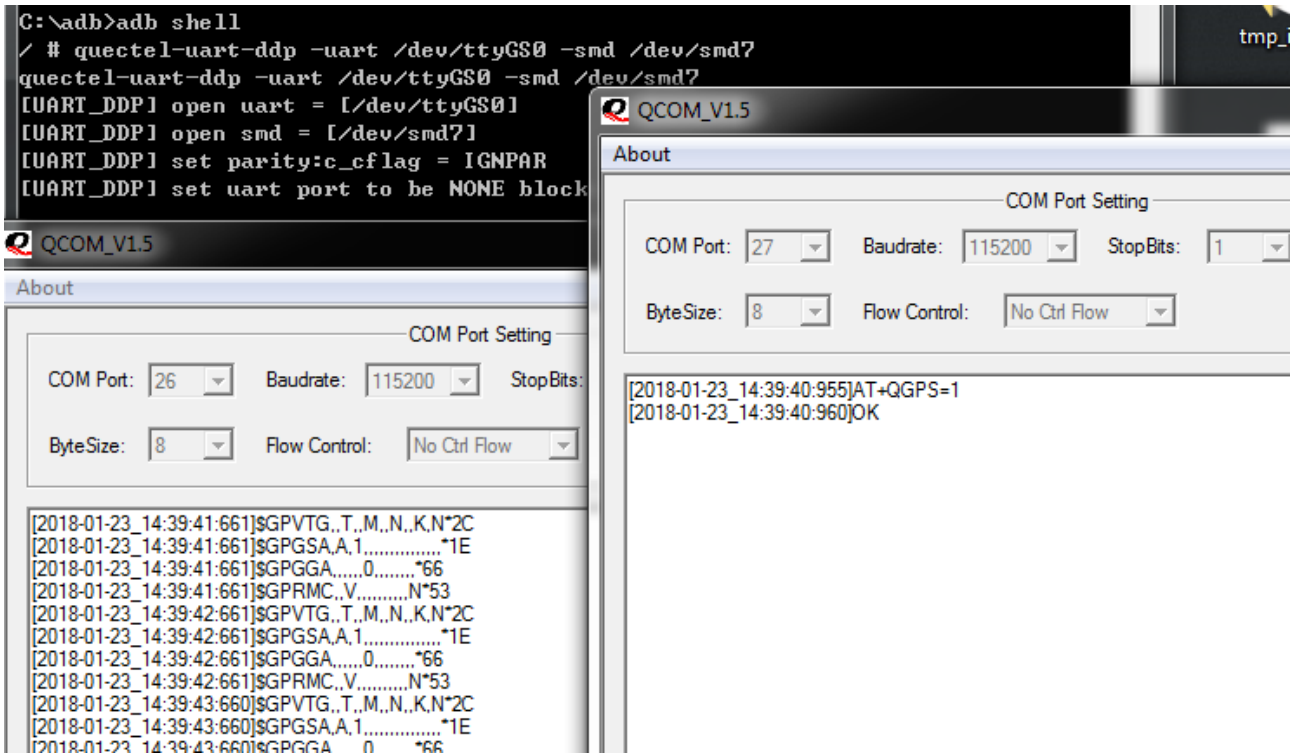


Figure 7: Data Forwarding Between USB NMEA Port and SMD7

# 4 Appendix A References

**Table 2: Related Document**

SN	Document Name	Remark
[1]	Quectel_LTE_Standard_GNSS_Application_Note	GNSS application note applicable to EC2x series, EG9x series and EG25-G modules.

**Table 3: Terms and Abbreviations**

Abbreviation	Description
GNSS	Global Navigation Satellite System
NMEA	NMEA (National Marine Electronics Association) 0183 Interface Standard
PC	Personal Computer
SMD	Surface Mounted Devices
UART	Universal Asynchronous Receiver/Transmitter
USB	Universal Serial Bus