

## Instruction for Tool\_For\_BG95M3\_M5\_600L\_Erase\_EFS2APPS

When you see your device (BG95 inside) running into a continuously reboot loop.

It may cause by something in DAM app crashing module. you need try to remove it from datatx folder in anyway. Then you will have chance to modify the dam app code and reload and run it.

Here are two methods:

1. Use AT command to disable dam app loading

If you have enough time to send AT to the module every time you start the device, you can execute the following command to disable DAM app.

```
AT+QCFGEXT = "quecopen",1 // disable dam app , set 0,enable APP
```

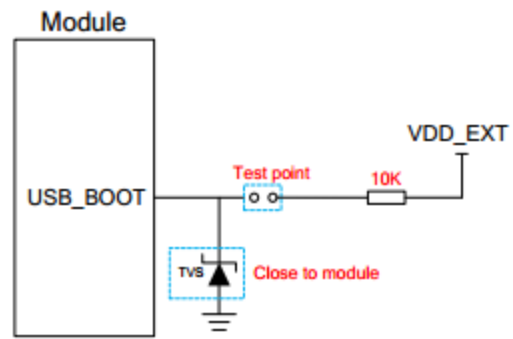
datatx dir will generate oem\_app\_disable.ini, restart the device, DAM app will no longer be loaded.

2. Use the qfirehose Erase file of the corresponding module to erase the dam app

"Tool\_For\_BG95M1/3\_Erase\_EFS2APPS.zip" is designed to clear up /datatx folder to remove .bin file.

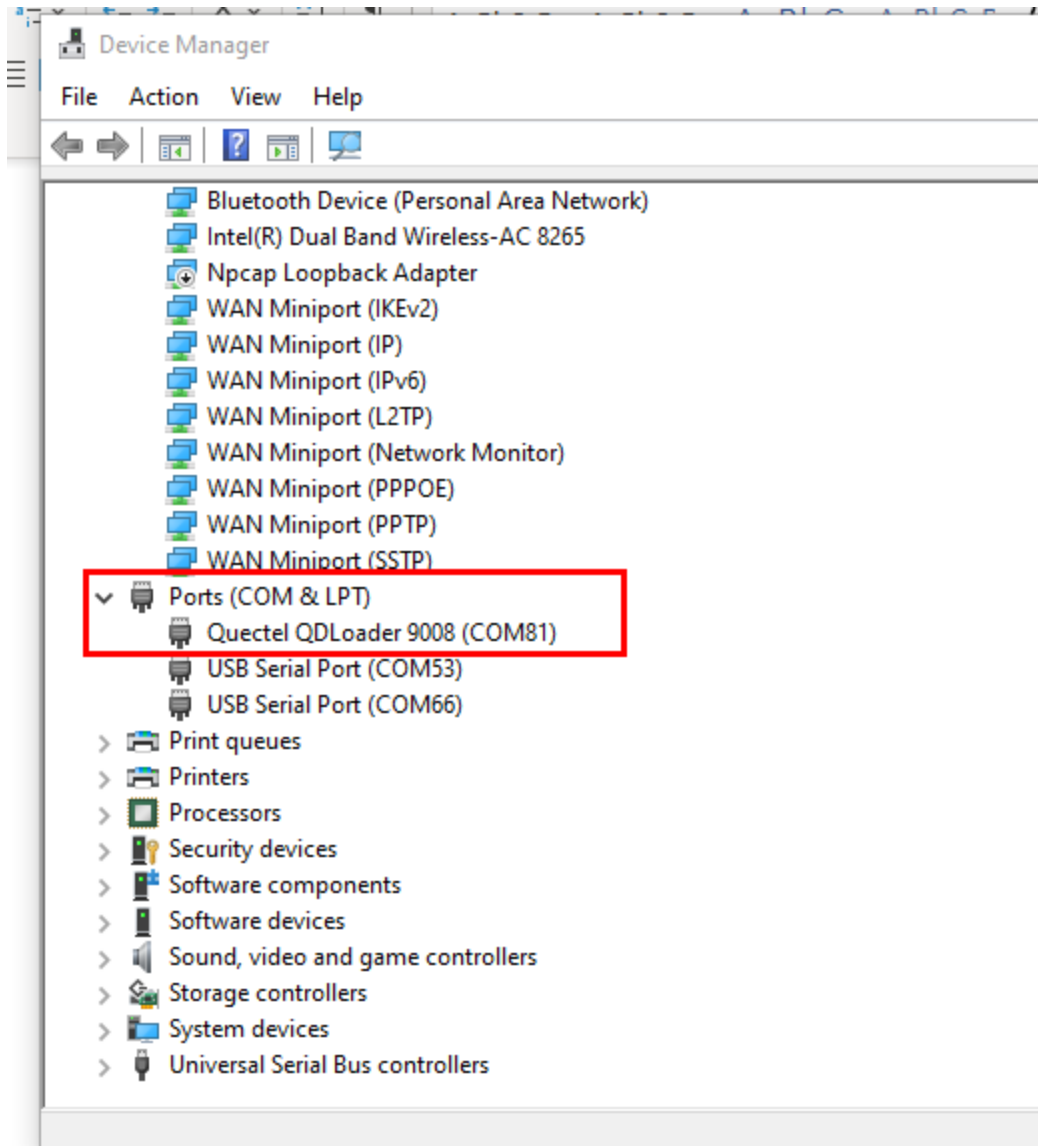
Here is the steps.

1. connect module pin75 to 1.8V.



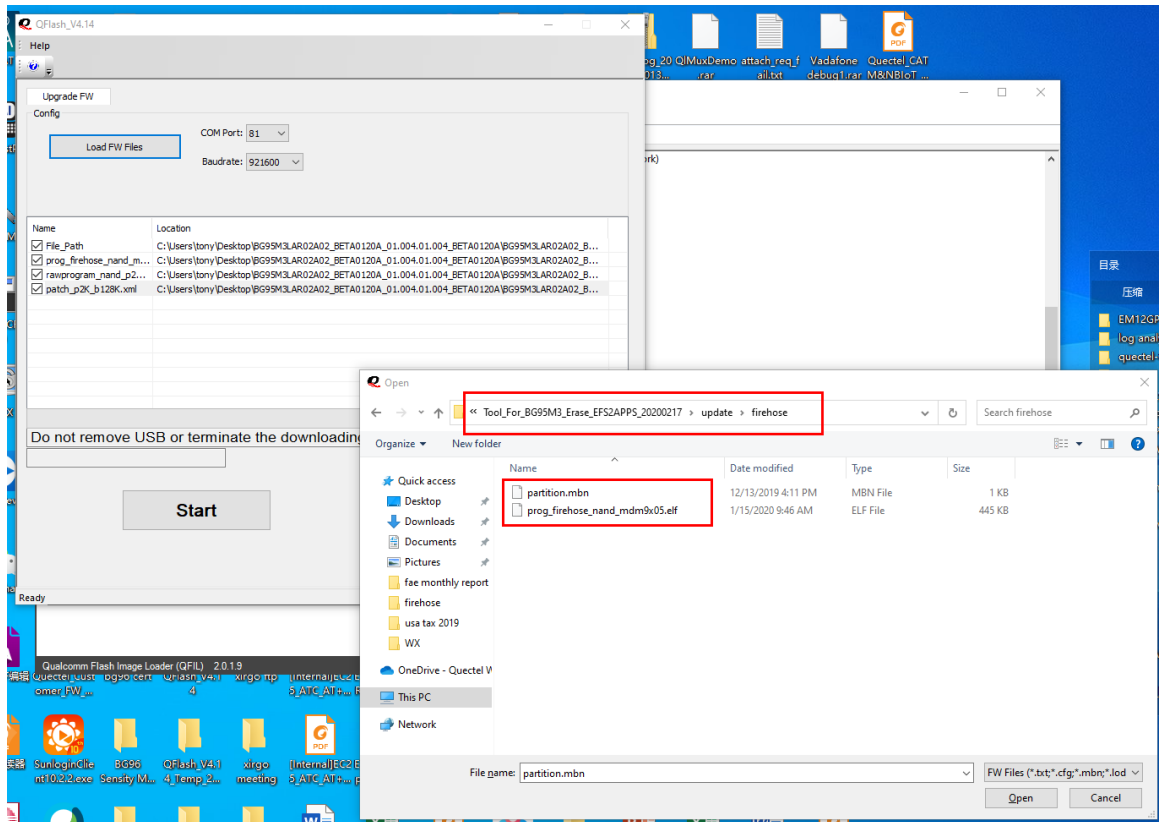
**Figure 24: Reference Design of USB\_BOOT Interface**

2. power cycle module. wait until you see QDloader 9008 port.



3. disconnect usb\_boot pin75 from 1.8v

4. use Qflash tool to select any file in  
\\Tool\_For\_BG95M1(3)\_Erase\_EFS2APPS\_20200217\\Tool\_For\_BG95M3\_Erase\_EFS2APP  
S\_20200217\\update\\firehose  
and select the port as qdloader in qflash, and start. (note , please terminate qpst or  
qxdm which is grabbing the port)



5. you should see the upgrade is ongoing until getting a “pass” result, module will reboot automatically . then all files in /datatx folder are cleared up.

6. The following are qfirehose Erase files, pls select the corresponding version



Tool\_For\_BG95M3\_M5\_600L\_Erase\_EFS2APPS\_20200408.zip

