

EC25 Series & EG21-G eSIM AT Commands Manual

LTE Standard Module Series

Version: 1.0.0

Date: 2022-09-30

Status: Preliminary



At Quectel, our aim is to provide timely and comprehensive services to our customers. If you require any assistance, please contact our headquarters:

Quectel Wireless Solutions Co., Ltd.

Building 5, Shanghai Business Park Phase III (Area B), No.1016 Tianlin Road, Minhang District, Shanghai 200233, China

Tel: +86 21 5108 6236

Email: info@quectel.com

Or our local offices. For more information, please visit:

<http://www.quectel.com/support/sales.htm>.

For technical support, or to report documentation errors, please visit:

<http://www.quectel.com/support/technical.htm>.

Or email us at: support@quectel.com.

Legal Notices

We offer information as a service to you. The provided information is based on your requirements and we make every effort to ensure its quality. You agree that you are responsible for using independent analysis and evaluation in designing intended products, and we provide reference designs for illustrative purposes only. Before using any hardware, software or service guided by this document, please read this notice carefully. Even though we employ commercially reasonable efforts to provide the best possible experience, you hereby acknowledge and agree that this document and related services hereunder are provided to you on an “as available” basis. We may revise or restate this document from time to time at our sole discretion without any prior notice to you.

Use and Disclosure Restrictions

License Agreements

Documents and information provided by us shall be kept confidential, unless specific permission is granted. They shall not be accessed or used for any purpose except as expressly provided herein.

Copyright

Our and third-party products hereunder may contain copyrighted material. Such copyrighted material shall not be copied, reproduced, distributed, merged, published, translated, or modified without prior written consent. We and the third party have exclusive rights over copyrighted material. No license shall be granted or conveyed under any patents, copyrights, trademarks, or service mark rights. To avoid ambiguities, purchasing in any form cannot be deemed as granting a license other than the normal non-exclusive, royalty-free license to use the material. We reserve the right to take legal action for noncompliance with abovementioned requirements, unauthorized use, or other illegal or malicious use of the material.

Trademarks

Except as otherwise set forth herein, nothing in this document shall be construed as conferring any rights to use any trademark, trade name or name, abbreviation, or counterfeit product thereof owned by Quectel or any third party in advertising, publicity, or other aspects.

Third-Party Rights

This document may refer to hardware, software and/or documentation owned by one or more third parties (“third-party materials”). Use of such third-party materials shall be governed by all restrictions and obligations applicable thereto.

We make no warranty or representation, either express or implied, regarding the third-party materials, including but not limited to any implied or statutory, warranties of merchantability or fitness for a particular purpose, quiet enjoyment, system integration, information accuracy, and non-infringement of any third-party intellectual property rights with regard to the licensed technology or use thereof. Nothing herein constitutes a representation or warranty by us to either develop, enhance, modify, distribute, market, sell, offer for sale, or otherwise maintain production of any our products or any other hardware, software, device, tool, information, or product. We moreover disclaim any and all warranties arising from the course of dealing or usage of trade.

Privacy Policy

To implement module functionality, certain device data are uploaded to Quectel’s or third-party’s servers, including carriers, chipset suppliers or customer-designated servers. Quectel, strictly abiding by the relevant laws and regulations, shall retain, use, disclose or otherwise process relevant data for the purpose of performing the service only or as permitted by applicable laws. Before data interaction with third parties, please be informed of their privacy and data security policy.

Disclaimer

- a) We acknowledge no liability for any injury or damage arising from the reliance upon the information.
- b) We shall bear no liability resulting from any inaccuracies or omissions, or from the use of the information contained herein.
- c) While we have made every effort to ensure that the functions and features under development are free from errors, it is possible that they could contain errors, inaccuracies, and omissions. Unless otherwise provided by valid agreement, we make no warranties of any kind, either implied or express, and exclude all liability for any loss or damage suffered in connection with the use of features and functions under development, to the maximum extent permitted by law, regardless of whether such loss or damage may have been foreseeable.
- d) We are not responsible for the accessibility, safety, accuracy, availability, legality, or completeness of information, advertising, commercial offers, products, services, and materials on third-party websites and third-party resources.

Copyright © Quectel Wireless Solutions Co., Ltd. 2022. All rights reserved.

About the Document

Revision History

Version	Date	Author	Description
-	2022-09-30	Neo JIANG	Creation of the document
1.0.0	2022-09-30	Neo JIANG	Preliminary

Contents

About the Document	3
Contents	4
Table Index	5
1 Introduction	6
1.1. Applicable Modules	6
1.2. Definitions	6
1.3. AT Command Syntax	6
1.4. AT Command Responses	8
1.5. Declaration of AT Command Examples	8
2 Local Management Commands	9
2.1. AT+QESIM="list" List Profiles	9
2.2. AT+QESIM="enable" Enable Profiles	10
2.3. AT+QESIM="disable" Disable Profiles	11
2.4. AT+QESIM="delete" Remove Profiles	12
2.5. AT+QESIM="nickname" Set New Nickname for Profiles	13
2.6. AT+QESIM="eid" Get eUICC ID of the Module	14
3 Profile Download Commands	15
3.1. External Network Mode	15
3.1.1. AT+QESIM="download" Initiate the Download Process of Profile	15
3.1.2. AT+QESIM="trans" Forward DP+ Messages	17
3.1.3. Download Profiles Through AT Commands	20
3.2. Internal Network Mode	22
3.2.1. AT+QESIM="ota" Download the Profile from DP+ and Install It to the eUICC	22
4 eSIM Related Notifications	24
5 Summary of Error Codes	25

Table Index

Table 1: Applicable Modules.....	6
Table 2: Types of AT Commands	7
Table 3: eSIM Related Notifications	24
Table 4: Internal Error.....	25
Table 5: eUICC Error.....	25
Table 6: SMDP+ Error	28

1 Introduction

This Document introduce the AT command of ESIM in EC25 series and EG21-G Module.

1.1. Applicable Modules

Table 1: Applicable Modules

Module Series	Module
EC25	EC25-E
	EC25-EU
EG21	EG21-G

1.2. Definitions

- **<CR>** Carriage return character.
- **<LF>** Line feed character.
- **<...>** Parameter name. Angle brackets do not appear on command line.
- **[...]** Optional parameter of a command or an optional part of TA information response. Square brackets do not appear on the command line. When an optional parameter is not given in a command, the new value equals its previous value or the default settings, unless otherwise specified.
- **Underline** Default setting of a parameter.

1.3. AT Command Syntax

All command lines must start with **AT** or **at** and end with **<CR>**. Information responses and result codes always start and end with a carriage return character and a line feed character: **<CR><LF><response><CR><LF>**. In tables presenting commands and responses throughout this

document, only the commands and responses are presented, and <CR> and <LF> are deliberately omitted.

The AT Commands Set implemented by EC25 series and EG21-G is a combination of 3GPP TS 27.007, 3GPP TS 27.005 and ITU-T recommendation V.25ter as well as the AT Commands developed by Quectel.

AT commands implemented by EC25 series and EG21-G fall into one category syntactically:

- **Extended**

Extended commands can be executed in several modes, as shown in the following table:

Table 2: Types of AT Commands

Command Type	Syntax	Description
Test Command	AT+<cmd>=?	Test the existence of the corresponding command and return information about the type, value, or range of its parameter.
Read Command	AT+<cmd>?	Check the current parameter value of the corresponding command.
Write Command	AT+<cmd>=<p1>[,<p2>[,<p3>[...]]]	Set user-definable parameter value.
Execution Command	AT+<cmd>	Return a specific information parameter or perform a specific action.

Multiple commands can be placed on a single line using a semi-colon (;) between commands. In such cases, only the first command should have **AT** prefix. Commands can be in upper or lower case.

Spaces should be ignored when you enter AT commands, except in the following cases:

- Within quoted strings, where spaces are preserved;
- Within an unquoted string or numeric parameter;
- Within an IP address;
- Within the AT command name up to and including a =, ? or =?.

On input, at least a carriage return is required. A newline character is ignored so it is permissible to use carriage return/line feed pairs on the input.

If no command is entered after the **AT** token, **OK** will be returned. If an invalid command is entered, **ERROR** will be returned.

Optional parameters, unless explicitly stated, need to be provided up to the last entered parameter.

1.4. AT Command Responses

When the AT command processor has finished processing a line, it will output **OK**, **ERROR** or **+CME ERROR: <err>** to indicate that it is ready to accept a new command. Solicited information responses are sent before the final **OK**, **ERROR** or **+CME ERROR: <err>**.

Responses will be in the format of:

```
<CR><LF>+CMD1:<parameters><CR><LF>  
<CR><LF>OK<CR><LF>
```

Or

```
<CR><LF><parameters><CR><LF>  
<CR><LF>OK<CR><LF>
```

1.5. Declaration of AT Command Examples

The AT command examples in this document are provided to help you learn about the use of the AT commands introduced herein. The examples, however, should not be taken as Quectel's recommendations or suggestions about how to design a program flow or what status to set the module into. Sometimes multiple examples may be provided for one AT command. However, this does not mean that there is a correlation among these examples, or that they should be executed in a given sequence.

2 Local Management Commands

2.1. AT+QESIM="list" List Profiles

This command lists profiles currently installed for the module.

AT+QESIM="list" List Profiles

Write Command
AT+QESIM="list",<mode>]

Response
 if <result> is 0:
+QESIM: "list",0[
 <iccid>,<status>,<nickname>,<provider>
 <iccid>,<status>,<nickname>,<provider>
 ...]
OK

if <result> is not 0:
+QESIM: "list",<result>[,<errinfo1>,<errinfo2>]

OK
 Or
ERROR

If there is an error related to ME functionality:
+CME ERROR: <err>

Maximum Response Time 6000 ms

Characteristics /

Parameter

<mode>	Integer type. List mode. 0 List profiles with profile class = 2 in eUICC 1 List all profiles in eUICC
<iccid>	String type. ICCID of the current profile.
<status>	Integer type. Profile state.

	0	Profile Disabled
	1	Profile Enabled
<nickname>	String type. Profile nickname.	
<provider>	String type. Service provider name.	
<result>	Integer type. Result code. Range: 0–3. Please refer to Chapter 5 for specific error information.	
<errinfo1>	String type. Error information 1. If <result> is 0, it will not be presented.	
<errinfo2>	String type. Error information 2. If <result> is 0, it will not be presented.	

Example

```
AT+QESIM="list"
+QESIM: "list",0
"8932042000000199885F",1,"sim1","V-Telekom"
"89320420000002068839",0,"YFL1","YFL1"

OK
```

NOTE

IF the optional parameter <mode> is omitted, the default value 0 will be used.

2.2. AT+QESIM="enable" Enable Profiles

This command enables profiles currently installed for the module.

AT+QESIM="enable" Enable Profiles	
Write Command AT+QESIM="enable",<iccid>	Response +QESIM: "enable",<result>[,<errinfo1>,<errinfo2>] OK Or ERROR If there is an error related to ME functionality: +CME ERROR: <err>
Maximum Response Time	6000 ms
Characteristics	/

Parameter

<iccid>	String type. The ICCID number of the profile.
<result>	Integer type. Result code. Range: 0–3. Please refer to Chapter 5 for specific error information.
<errinfo1>	String type. Error information 1. If <result> is 0, it will not be presented.
<errinfo2>	String type. Error information 2. If <result> is 0, it will not be presented.

Example

```
AT+QESIM="enable","8932042000000199885F"
+QESIM: "enable",0
OK
```

2.3. AT+QESIM="disable" Disable Profiles

This command disables profiles currently enabled for the module.

AT+QESIM="disable" Disable Profiles	
Write Command AT+QESIM="disable",<iccid>	Response +QESIM: "disable",<result>[,<errinfo1>,<errinfo2>] OK Or ERROR If there is an error related to ME functionality: +CME ERROR: <err>
Maximum Response Time	6000 ms
Characteristics	/

Parameter

<iccid>	String type. The ICCID number of the profile.
<result>	Integer type. Result code. Range: 0–3. Please refer to Chapter 5 for specific error information.
<errinfo1>	String type. Error information 1. If <result> is 0, it will not be presented.
<errinfo2>	String type. Error information 2. If <result> is 0, it will not be presented.

Example

```
AT+QESIM="disable","8932042000000199885F"
+QESIM: "disable",0

OK
```

2.4. AT+QESIM="delete" Remove Profiles

This command removes profiles currently installed for the module.

AT+QESIM="delete" Remove Profiles

Write Command AT+QESIM="delete",<iccid>	Response +QESIM: "delete",<result>[,<errinfo1>,<errinfo2>] OK Or ERROR If there is an error related to ME functionality: +CME ERROR: <err>
Maximum Response Time	6000 ms
Characteristics	/

Parameter

<iccid>	String type. The ICCID number of the profile.
<result>	Integer type. Result code. Range: 0–3. Please refer to Chapter 5 for specific error information.
<errinfo1>	String type. Error information 1. If <result> is 0, it will not be presented.
<errinfo2>	String type. Error information 2. If <result> is 0, it will not be presented.

Example

```
AT+QESIM="delete","8932042000000199885F"
+QESIM: "delete",0

OK
```

2.5. AT+QESIM="nickname" Set New Nickname for Profiles

This command sets new nickname for profiles.

AT+QESIM="nickname" Set New Nickname for Profiles	
Write Command AT+QESIM="nickname",<nickname>,<iccid>	Response +QESIM: "nickname",<result>[,<errinfo1>,<errinfo2>] OK Or ERROR If there is an error related to ME functionality: +CME ERROR: <err>
Maximum Response Time	6000 ms
Characteristics	The command takes effect immediately.

Parameter

<nickname>	String type. The new nickname of the profile. Maximum length is 32 characters.
<iccid>	String type. The ICCID number of the profile.
<result>	Integer type. Result code. Range: 0–3. Please refer to Chapter 5 for specific error information.
<errinfo1>	String type. Error information 1. If <result> is 0, it will not be presented.
<errinfo2>	String type. Error information 2. If <result> is 0, it will not be presented.

Example

```
AT+QESIM="nickname","simcad_test","8932042000000199885F"
+QESIM: "nickname",0
OK
```

2.6. AT+QESIM="eid" Get eUICC ID of the Module

This command gets eUICC ID of the module.

AT+QESIM="eid" Get eUICC ID of the Module

Write Command
AT+QESIM="eid"

Response
If <result> is 0:
+QESIM: "eid",0,<eid>

If <result> is not 0:
+QESIM: "eid",<result>,<errinfo1>,<errinfo2>

OK
Or
ERROR

If there is an error related to ME functionality:
+CME ERROR: <err>

Maximum Response Time 6000 ms

Characteristics /

Parameter

<eid>	String type. eUICC ID.
<result>	Integer type. Result code. Range: 0–3. Please refer to Chapter 5 for specific error information.
<errinfo1>	String type. Error information 1. If <result> is 0, it will not be presented.
<errinfo2>	String type. Error information 2. If <result> is 0, it will not be presented.

Example

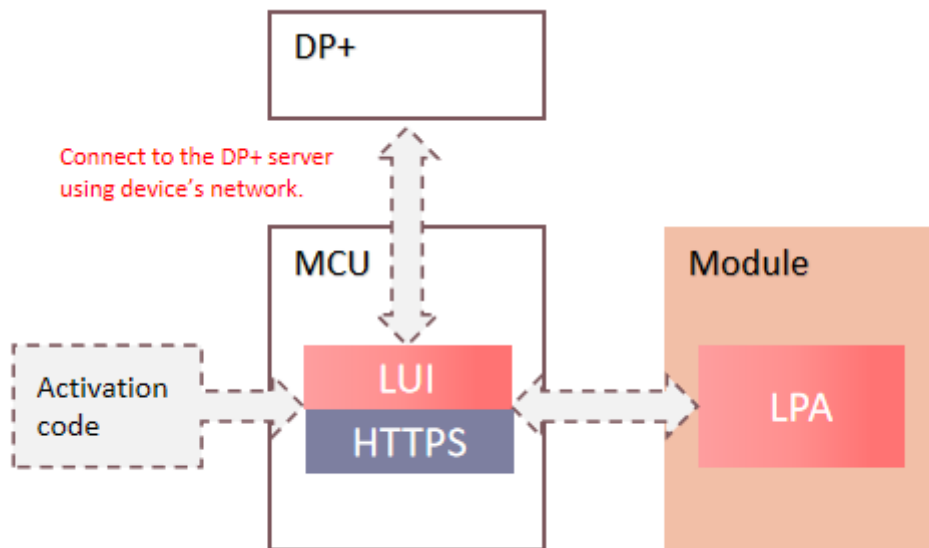
```
AT+QESIM="eid"
+QESIM: "eid",0,"89049032000001000000092092075457"

OK
```

3 Profile Download Commands

3.1. External Network Mode

In this mode, the MCU acts as a communication channel between the module and DP+ to transfer messages. The MCU should establish a connection with DP+ via HTTPS, and use UART to communicate with the module. This applies to scenarios where the eUICC does not have an initial profile and the MCU has networking capability (e.g. WIFI). Please refer to **Chapter 3.1.3** for the detailed process.



3.1.1. AT+QESIM="download" Initiate the Download Process of Profiles

This command initiates the download process of profile. The module will report an unsolicited result code : **+QESIM: "download",<ret>** to indicate the profile download result when the process of download and the profile installation end.

AT+QESIM="download" Initiate the Download Process of Profiles

Write Command	Response
AT+QESIM="download",<activationCode>[,<confirmationCode>]	If <result> is 0: +QESIM: "trans",0,<url>,<payloadlen>,<payload>

	<p>If <result> is not 0: +QESIM: "trans",<result>,<errinfo1>,<errinfo2></p> <p>OK Or ERROR</p> <p>If there is an error related to ME functionality: +CME ERROR: <err></p>
Maximum Response Time	6000 ms
Characteristics	/

Parameter

<activationCode>	String type. From the QR code scan.
<confirmationCode>	String type. A code used to authorize the usage of the MatchingID to confirm the download and installation of the profile.
<url>	String type. HTTP URL. This is the specific address used by DP+ to process messages.
<payloadlen>	Integer type. The length of <payload> .
<payload>	String type. The json format data that needs to be sent to DP+.
<result>	Integer type. Result code. Range: 0–3. Please refer to Chapter 5 for specific error information.
<errinfo1>	String type. Error information 1. If <result> is 0, it will not be presented.
<errinfo2>	String type. Error information 2. If <result> is 0, it will not be presented.
<ret>	Integer type. Range: 0–1. The profile download and installation result. 0 Success 1 Failure

Example

```
AT+QESIM="download","LPA:1$testsmplus.infineon.com$0000-0000-0000-3003"
+QESIM: "trans",0,"/gsma/rsp2/es9plus/initiateAuthentication",239,{"euiccChallenge":"hOuZDc
gULnLzkOZv8hWO3w==","euiccInfo1":"vyBhggMCAgKpLAQUwLxwujaSnUO0Z/9XVwUw5Xq4/Ng
EFPVBcr35ipXWXL64ijhwr2ACoXDqiwEFMC8cLo2kp1DtGf/V1cFMOV6uPzYBBT1QXK9+YqV1ly+
ulo4ocEdgAqFww==","smdpAddress":"testsmplus.infineon.com"}"
OK
```

NOTE

1. If the Confirmation code required Flag in **<activationCode>** is 1, **<confirmationCode>** is required. Please refer to **Chapter 3.1.3** for the download process.

2. Activation Codes are typically obtained from Mobile Network Operator and are structured as follows:

Name	Description	MOC
AC_Format	Format of the Activation Code. SHALL be set to "1" for this Format of the Activation Code and any subsequent backward compatible Format	M
Delimiter	SHALL be set to "\$"	M
SM-DP+ Address	FQDN (Fully Qualified Domain Name) of the SM-DP+ (e.g., SMDP.GSMA.COM) restricted to the Alphanumeric mode character set defined in table 5 of ISO/IEC 18004 [15] excluding '\$'	M
Delimiter	SHALL be set to "\$"	M
AC_Token	MatchingID as described in section (4.1.1)	M
Delimiter	SHALL be present and set to "\$" if any of the following optional parameters is present	C
SM-DP+ OID	SM-DP+ OID in the CERT.DPauth.ECDSA	O
Delimiter	SHALL be present and set to "\$" if any of the following optional parameters is present	C
Confirmation Code Required Flag	SHALL be present and set to "1" if Confirmation Code is required; otherwise it SHALL be absent	O

3.1.2. AT+QESIM="trans" Forward DP+ Messages

This command forwards DP+ messages to the module during the process of downloading and installing the profile, and the module will report an unsolicited result code: **+QESIM: "trans",0,<url>,<payloadlen>,<payload>** or **+QESIM: "trans",<result>[,<errinfo1>,<errinfo2>]** when the module receives a complete and correct DP+ message.

AT+QESIM="trans" Forward DP+ Messages	
Write Command AT+QESIM="trans",<totalen>,<state>,<seq>,<len>,<data>	Response +QESIM: "trans",<result>[,<errinfo1>,<errinfo2>] OK Or ERROR If there is an error related to ME functionality: +CME ERROR: <err>
Maximum Response Time	500 ms
Characteristics	/

Parameter

<totalen>	Integer type. The total length of the DP+ message after it is converted into a HEX string. Range: 0–65535. If the DP+ message is greater than the maximum value of <len> , the DP+ message needs to be divided into multiple data packets for forwarding.
<state>	Integer type. Data block status. 0 Last packet of DP+ message 1 Not last packet of DP+ message
<seq>	Integer type. Serial number. Range: 0–255.
<len>	Integer type. The length of data to be sent. Range: 0–1400. If <totalen> is greater than the maximum value of <len> , the DP+ message needs to be divided into multiple data packets for forwarding.
<data>	Hex string type. The send data of DP+ message.
<url>	String type. HTTP URL. This is the specific address used by DP+ to process messages.
<payloaden>	Integer type. The length of <payload> .
<payload>	String type. The json format data that needs to be sent to DP+.
<result>	Integer type. Result code. Range: 0–3. Please refer to Chapter 5 for specific error information.
<errinfo1>	String type. Error information 1. If <result> is 0, it will not be presented.
<errinfo2>	String type. Error information 2. If <result> is 0, it will not be presented.

NOTE

The maximum data length that **AT+QESIM="trans"** command can send per packet is 1400 hex string, If the data is greater than 1400, it needs to be sent in multiple packets.

Example

```
AT+QESIM="download","LPA:1$demo-consumer.validspereachdpplus.com$1BINSTP8J0EFCWLL
E4JY4S0YGO7II40ZXSQESI06THYWPLZ-W65CXYWK5-KPZJCZ"
+QESIM: "trans",0,"/gsma/rsp2/es9plus/initiateAuthentication",195,{"euiccChallenge":"WbVmufL
nshaRFR2d/Vm+1w==","euiccInfo1":"vyA1ggMCAgKpFgQUgTcPUSXQsdQI1MOyMubSXnlb6/uqF
gQUgTcPUSXQsdQI1MOyMubSXnlb6/uQAA==","smdpAddress":"demo-consumer.validspereachd
pplus.com"}"
```

OK

```
AT+QESIM="trans",2924,1,0,1400,"485454502F312E312032303041646D696E2D50726F746F636F6C
3A2067736D612F7273702F76322E322E32436F6E74656E742D547970653A206170706C6963617469
6F6E2F6A736F6E3B636861727365743D5554462D38436F6E74656E742D4C656E6774683A2031333
230446174653A204D6F6E2C203235204F637420323032312030323A32393A343820474D547B22686
561646572223A7B2266756E6374696F6E457865637574696F6E537461747573223A7B227374617475
73223A2245786563757465642D53756363657373227D7D2C227472616E73616374696F6E4964223A2
23334364333383935383944393641453842423944314139324142393536463737222C22736572766572
```

```
5369676E656431223A224D463241454452734F4A574A3257726F753530616B7175566233654245466
D315A726E794A3749576B5255646E66315A767465444A57526C6257387459323975633356745A584
975646D46736157527A634756795A57466A61475277634778316379356A623232454545724C34342F
59427344704F42706B507A43694671733D222C227365727665725369676E617475726531223A22587
A6441396D6573684A517878723142656A58743042686A656E64627A373958396C7530337A6E42644
C6A36696C4A6C525A6C464577326A514554656E53714B34736333797A496B41505652542F415266
315564644E556C75773D3D222C2265756963634369504B4964546F426555736564223A22424253424
E7739524A64437831416A557737497935744A65655676722B773D3D222C2273657276657243657274
69666963617465223A224D49494367444343416961674177494241674951637A5A456B562B7646523
8335936656B4E363636447A414B42676771686B6A4F50515144416A42454D52677746675944565151
4B457739485530306751584E7A62324E7059585270623234784B44416D"
```

```
+QESIM: "trans",0
```

```
OK
```

```
AT+QESIM="trans",2924,1,1,1400,"42674E5642414D54483064545453424263334E7659326C686447
6C766269417449464A5455444967556D397664434244535445774868634E4D6A41774E6A45774D44
41774D4441775768634E4D6A4D774E6A41354D6A4D314F545535576A42734D51737743515944565
1514745774A46557A45734D436F474131554543684D6A566D4673615751675532397364574E706232
356C637942555A574E75623278765A326C6A59584D67557935424C6C55784654415442674E564241
735444464E5855794257595778705A434246557A45594D4259474131554541784D50566B464D53555
16755303074524642776248567A4D466B77457759484B6F5A497A6A3043415159494B6F5A497A6A
3044415163445167414554463630496F575930687A4630715959657A765A614D6A4D6A5A6368376C
383958456A377468365A354B35673957336A6E795937713450634E695555517A63683535475271486
56C4630664C366A6E6A7431345079364F42305443427A6A416442674E564851344546675155303155
614234516A41663178414467724F4E6D55737A36594276417746775944565230674151482F42413077
437A414A4267646E67524942416745454D45304741315564487752474D455177517142416F4436475
0476830644841364C79396E633231684C574E796243357A655731686458526F4C6D4E76625339765
A6D5A736157356C593245765A334E7459533179633341794C584A766233517459326B784C6D4E796
244414F42674E56485138424166384542414D43423441774641594456523052424130774334674A4B7
7594242414743343077494D42384741315564497751594D426141464945334431456C304C4855434E5
444736A4C6D306C3535572B76374D416F4743437147534D343942414D43413067414D45554349514
37632665761416737376B4C504776623462445844534E54765155746B59"
```

```
+QESIM: "trans",0
```

```
OK
```

```
AT+QESIM="trans",2924,0,2,124,"776167517071436145596C5A75514967525243594A78646135784
767546C7073436A317A5868376E496666624261536B7537386834626177354F6F3D227D"
```

```
+QESIM: "trans",0
```

```
OK
```

```
+QESIM: "trans",0,"/gsma/rsp2/es9plus/authenticateClient",2304,"{"transactionId":"346C389589
D96AE8BB9D1A92AB956F77","authenticateServerResponse":"vziCBnugggZ3MIIBGYAQNw4IYn
Zaui7nRqSq5Vvd4MIZGVtby1jb25zdW1lci52YWxpZHNwZXJlYWN0ZHBwbHVzLmNvbYQQSsvjj9g
```

```
GwOk4GmQ/MKIWq78ieYEDAgMBggMCAgKDAyIBAYQPgQEAggQABry/gwQAACjBhQUGfz7/wIY
DDAAAhwMCAwCIAgPYqRYEFIE3D1EI0LHUCNTDsJm0I55W+v7qhYEFIE3D1EI0LHUCNTDsJm0I
55W+v7BAMAAAAMDVZELU1ELVVQLTA0MjCgUIBAMUJJTINUUDhKMEVGG1dMTEU0Sik0UzBZR
083SUK0MFpYU1FFU0kwNIRIwVdQTFotVzY1Q1hZV0s1LUtQWkpDWqEMgAgAAAEAEHAqEA
XzdAzD6neWNZxq/vR1JBGEpydKWcDs3e+QvcyrS0x+8sTmb4MIKvdPMrxJsTzHRMAIBKEEoTc+b
E2VXXYgMPfikowjCCAkYwggHsoAMCAQICFHB1/k3F6BXsigxdtCmDaWD94qPrMAoGCCqGSM49
BAMCMGYxCzAJBgNVBAYTAKVTMSowKAYDVQQKDCFWQUxJRCBTT0xVQ0IPTkVTIFRFQ05PTE
9HSUNBUyBTQVUxDjAMBGNVBAAsMBVZBTEIEMRswGQYDVQQDDBJWQUxJRCBVFU0gQ09OU1
VNRVlWlBcNMjEwNjE3MTEwODU0WhgPOTk5OTEyMzEyMzU5NTIaMHExCzAJBgNVBAYTAKVTMq
4wDAYDVQQKDAVWQUxJRDEXMBUGA1UEAwOVkFMSUQgRVVJQ0MgQ0QxZjAMBGNVBAAsM
BVZBTEIEMSkwJwYDVQQFDCAA4OTAZNDAXMTAyMjEwMDAwMDAwMDAwMDAwMDAzMDk5NTB
ZMBMGBYqGSM49AgEGCCqGSM49AwEHA0IABOyOsVYZzQY6ZWBe6CaaYXOqW9hc+WGTAlx1z
JPQXw2RW1+Xp8dfNO1sV+l6ho8L73L3e3/RvSyZC73d3UUEKN+jazBpMB8GA1UdlwQYMBaAFK8
6bAvGg+vfM7W6a8nluW4KaMyvMB0GA1UdDgQWBBScuCu9eUHD1i29kzzQ3rfhgVbaqzAOBgNV
HQ8BAf8EBAMCB4AwFwYDVR0gAQH/BA0wCzAJBgdnngRIBAgEBMAoGCCqGSM49BAMCA0gAM
EUCIHPceNKEuYDE3jkqjtceEB2ol/cimWolA51jGC5hhqhyAiEAhz11sJUNpPevPCd8i5a08U+VLPXY
/fvUvR8C6Y9XPA8wggLJMIICb6ADAgECAhBYZ3wyc4kb0hv8uYDONcsLMAoGCCqGSM49BAMC
MEQxGDAWBGNVBAoTD0dTTSBBc3NvY2IhdGlvbjEoMCMYGA1UEAxMfR1NNIEFzc29jaWF0aW9uI
C0gUINQMibSb290IENJMTAeFw0xOTA0MTEwMDAwMDBaFw00OTA0MTAyMzU5NTIaMGYxCzAJ
BgNVBAYTAKVTMSowKAYDVQQKDCFWQUxJRCBTT0xVQ0IPTkVTIFRFQ05PTE9HSUNBUyBTQV
UxDjAMBGNVBAAsMBVZBTEIEMRswGQYDVQQDDBJWQUxJRCBVFU0gQ09OU1VNRVlWWTATBg
qhkJOPQIBBggqhkJOPQMbbwNCAASCUaycu5eQY6sAG2oPkh+DTDwPWKXIKFb2of/fAmgqjezB
GgVFSIj70I4uNEDV/E2e4RUe+B8ZNtrL+aazZLc04IBHzCCARswHQYDVR0OBBYEFK86bAvGg+vf
M7W6a8nluW4KaMyvMBIGA1UdEwEB/wQIMAYBAf8CAQAwFwYDVR0gAQH/BA0wCzAJBgdnngRI
BAGECME0GA1UdHwRGMEQwQqBAoD6GPGh0dHA6Ly9nc21hLWNybc5zeW1hdXRoLmNvbS9v
ZmZsaW5lY2EvZ3NtYS1yc3AyLXJvb3QtY2kxLmNybDAOBgNVHQ8BAf8EBAMCAQYwNwYDVR0e
AQH/BC0wK6ApmCekJTAjMQ4wDAYDVQQKDAVWQUxJRDERMA8GA1UEBRMIODkwMzQwMTE
wFAYDVR0RBA0wC4gJKwYBBAGC40wEMB8GA1UdlwQYMBaAFIE3D1EI0LHUCNTDsJm0I55W+
v7MAoGCCqGSM49BAMCA0gAMEUCIQDIIjMVONpYB9krm994uZJ2MfX11ZB4jCPOorlfd2XcJAIgG
2h/eUPzuma4UZ/I2j4GOUh1ZeSxQYk2KpMLBvcqt4Y="}
```

3.1.3. Download Profiles Through AT Commands

HTTPS establishes a connection between the MCU and SM-DP+. The MCU uses the POST method to send data, where the URL and payload are obtained from the result code returned for each step of the module **+QESIM: "trans",0,<url>,<payloadlen>,<payload>**. The content of the HTTPS header during POST is as follows:

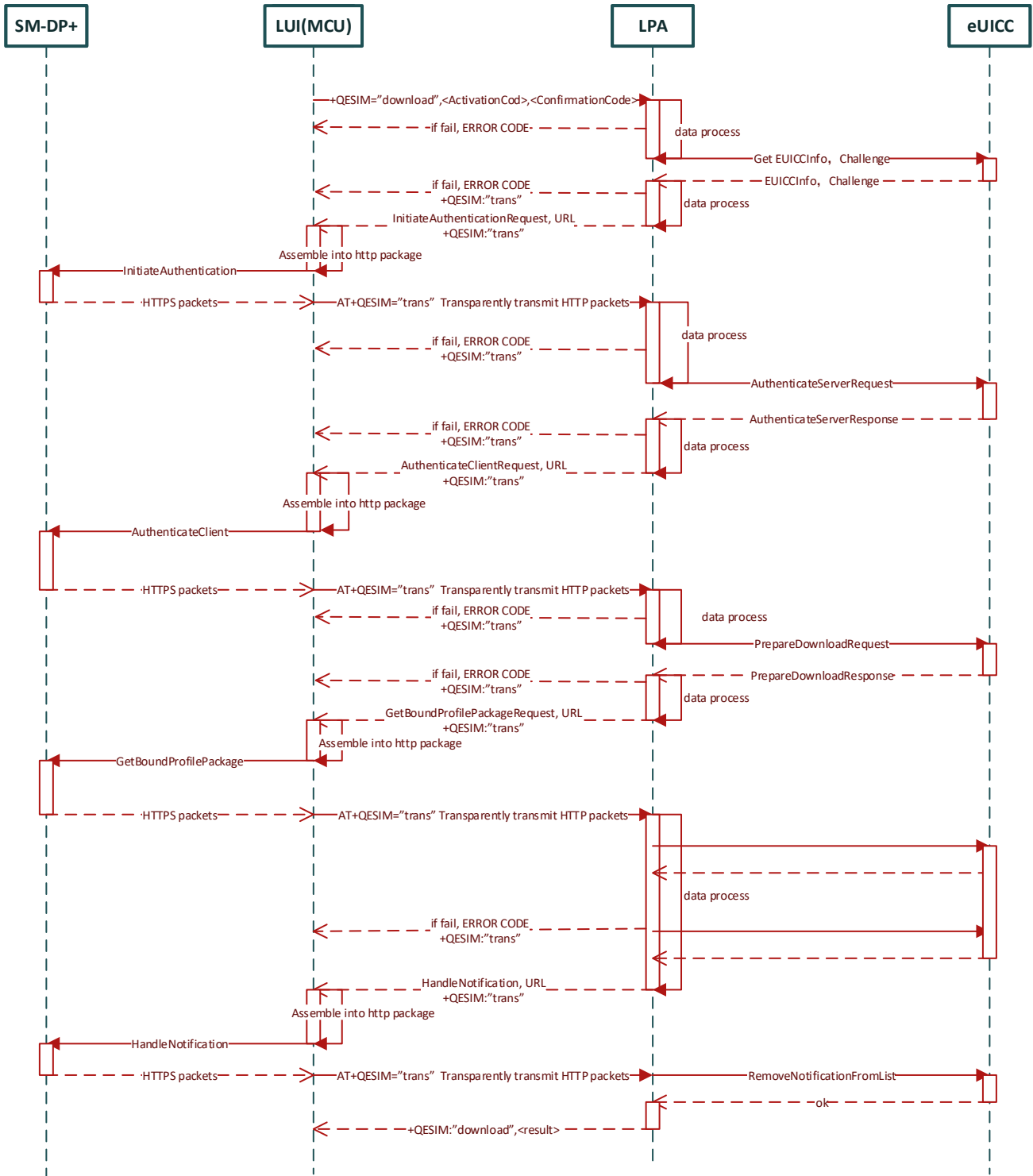
Header	Value
X-Admin-Protocol:	gsma/rsp/v2.2.0
Content-Type:	application/json

charset: utf-8

User-Agent: gsma-rsp-lpad

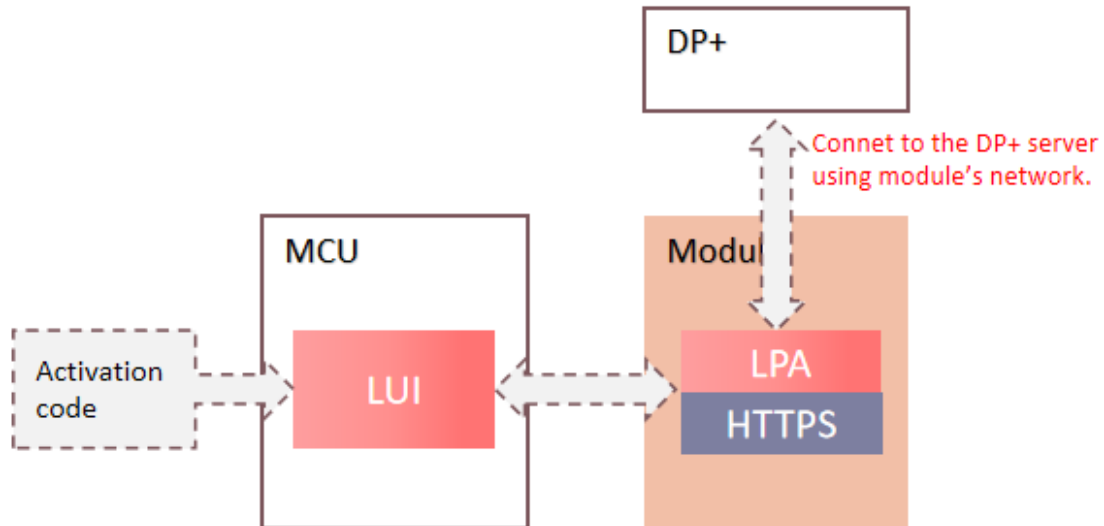
Host: Host and port, e.g. demo-consumer.validspereachdplusplus.com:443

Content-Length: Content length



3.2. Internal Network Mode

In this mode, the module needs to establish a HTTPS connection with DP+. This applies to scenarios where the eUICC has an initial profile and module can use this profile to connect to the network.



3.2.1. AT+QESIM="ota" Download the Profile from DP+ and Install It to the eUICC

This command downloads the profile from DP+ and install it to the eUICC. The module will report an unsolicited result code used to indicate the profile download result: **+QESIM: "ota",<result>,<errinfo1>,<errinfo2>** when the process of download and the profile installation end.

AT+QESIM="ota" Download the Profile from DP+ and Install It to the eUICC

Write Command AT+QESIM="ota",<activationCode>,<confirmationCode>	Response OK Or ERROR If there is an error related to ME functionality: +CME ERROR: <err>
Maximum Response Time	500 ms
Characteristics	/

Parameter

<activationCode>	String type. From the QR code scan.
<confirmationCode>	String type. A code used to authorize the usage of the MatchingID to confirm the download and installation of the profile.

<result>	Integer type. Result code. Range: 0–3. Please refer to Chapter 5 for specific error information.
<errinfo1>	String type. Error information 1. If <result> is 0, it will not be presented.
<errinfo2>	String type. Error information 2. If <result> is 0, it will not be presented.

Example

```
AT+QESIM="ota","LPA:1$testsmdpplus.infineon.com$0000-0000-0000-3003"
OK
```

NOTE

If the Confirmation Code Required Flag in **<activationCode>** is 1, **<confirmationCode>** is required. Please refer to **Chapter 3.1.3** for the download process.

4 eSIM Related Notifications

This chapter gives eSIM related notifications and their descriptions.

Table 3: eSIM Related Notifications

SN	URC Format	Description
[1]	+QESIM: "download",<ret>	The profile download and install process ends. The related resources of the module are released. <ret>: 0 Success 1 Failure
[2]	+QESIM: "trans",0,<url>,<payloadlen>,<payload>	Messages that need to be reported to DP+. <url>: HTTP URL <payloadlen>: The length of <payload>. <payload>: The jason format data that needs to be sent to DP+.
[3]	+QESIM: "trans",<result>[,<errinfo1>,<errinfo2>]	The profile download or installation error. <result>: Result code. Range: 0–3. <errinfo1>: Error information 1 <errinfo2>: Error information 2 Please refer to Chapter 5 for specific error information.
[4]	+QESIM: "ota",<result> [,<errinfo1>,<errinfo2>]	The profile download and install process ends. <result>: Result code. Range: 0–3. <errinfo1>: Error information 1 <errinfo2>: Error information 2 Please refer to Chapter 5 for specific error information.

5 Summary of Error Codes

If an error occurs in LPA, you can find the cause of the error by the following error code. Result code includes Success, Internal Error, eUICC Error, SMDPP Error. If Result code is 0, it means Success.

Table 4: Internal Error

<result>	<errinfo1>	<errinfo1>
InternalError (1)	Analyse False (99)	0
/	Parm Error (98)	0
/	Http Errorcode (1)	Errorcode (eg. 400,450,500)
/	APDUError (2)	SW code (eg. 6985,6A82,6700)

Table 5: eUICC Error

<result>	<errinfo1>	<errinfo1>
eUICCError (2)	ProfileInfoListResponse (1)	incorrectInputValues(1), undefinedError(127)
/	PrepareDownloadResponse (2)	invalidCertificate(1), invalidSignature(2), unsupportedCurve(3), noSessionContext(4), invalidTransactionId(5), undefinedError(127)
/	AuthenticateServerResponse (3)	invalidCertificate(1), invalidSignature(2), unsupportedCurve(3), noSessionContext(4), invalidOid(5), euiccChallengeMismatch(6), ciPKUnknown(7), undefinedError(127)
/	CancelSessionResponse (4)	invalidTransactionId(5),

		undefinedError(127)
/	ProfileInstallationResultData (5)	incorrectInputValues(1), invalidSignature(2), invalidTransactionId(3), unsupportedCrtValues(4), unsupportedRemoteOperationType(5), unsupportedProfileClass(6), scp03tStructureError(7), scp03tSecurityError(8), installFailedDueToIccidAlreadyExistsOnEuicc(9), installFailedDueToInsufficientMemoryForProfile(10), installFailedDueToInterruption(11), installFailedDueToPEProcessingError (12), installFailedDueToDataMismatch(13), testProfileInstallFailedDueToInvalidNaaKey(14), pprNotAllowed(15), installFailedDueToUnknownError(127)
/	listNotificationsResultError (6)	undefinedError(127)
/	setNicknameResult (7)	iccidNotFound (1), undefinedError(127)
/	RetrieveNotificationsListResponse (8)	undefinedError(127)
/	NotificationSentResponse (9)	nothingToDelete(1), undefinedError(127)
/	EnableProfileResponse (10)	iccidOrAidNotFound (1), profileNotInDisabledState(2), disallowedByPolicy(3), wrongProfileReenabling(4), catBusy(5), undefinedError(127)
/	DisableProfileResponse (11)	iccidOrAidNotFound (1), profileNotInEnabledState(2), disallowedByPolicy(3), catBusy(5), undefinedError(127)
/	DeleteProfileResponse (12)	iccidOrAidNotFound (1), profileNotInDisabledState(2), disallowedByPolicy(3), undefinedError(127)

/	LoadCRLResponseError (13)	invalidSignature(1), invalidCRLFormat(2), notEnoughMemorySpace(3), verificationKeyNotFound(4), fresherCrIAlreadyLoaded(5), baseCrIMissing(6), undefinedError(127)
---	---------------------------	---

Table 6: SMDP+ Error

<result>	<errinfo1>	<errinfo1>
SMDPPErr (3)	Subject Code (eg. 8.2)	Reason Code (eg. 3.1)
<p>Subject Code</p> <ul style="list-style-type: none"> 1. Generic <ul style="list-style-type: none"> 1.1. Function Requester 1.2. Function Provider <ul style="list-style-type: none"> 1.2.1. Validity Period 1.3. Protocol <ul style="list-style-type: none"> 1.3.1. Protocol Format 1.3.2. Protocol Version 1.4. External Resource 1.5 Extension Resource 1.6 Function 8. eUICC Remote Provisioning <ul style="list-style-type: none"> 8.1 eUICC <ul style="list-style-type: none"> 8.1.1 EID 8.2 Profile <ul style="list-style-type: none"> 8.2.1 Profile ICCID 8.2.2 POL1 8.2.3 POL2 8.2.4 Void 8.2.5 Profile Type 8.2.6 Subscription Address 8.3 ISD-P <ul style="list-style-type: none"> 8.3.1 ISD-P-AID 8.4 ISD-R 8.5 ECASD <ul style="list-style-type: none"> 8.5.1 Certification Request 8.5.2 Embedded UICC Certificate Authority 8.6 EIS 8.7 SM-SR <ul style="list-style-type: none"> 8.7.1 SM-SR certificate 	<p>Reason Code</p> <ul style="list-style-type: none"> 1. Access Error <ul style="list-style-type: none"> 1.1. Unknown (Identification or Authentication) 1.2. Not Allowed (Authorisation) 2. Format Error <ul style="list-style-type: none"> 2.1. Invalid 2.2. Mandatory Element Missing 2.3. Conditional Element Missing 3. Conditions of Use Not Satisfied <ul style="list-style-type: none"> 3.1. Unsupported 3.2. Maximum Size Exceeded 3.3. Already in Use (Uniqueness) 3.4. Invalid Destination 3.5. Invalid Transition 3.6. Related Objects Exists 3.7. Unavailable 3.8. Refused 3.9 Unknown 4. Processing Error <ul style="list-style-type: none"> 4.1. Function Already in Progress 4.2. Execution Error 4.3. Stopped on Warning 4.4. Busy 4.5. Operation Already Processed 4.6. Not Present / Missing 4.7. Generation Not Possible 4.8. Insufficient Memory 4.9. Unassigned 5. Transport Error <ul style="list-style-type: none"> 5.1. Inaccessible 5.2. Timeout 5.3. Time to Live Expired 5.4. Delivered With No Response 5.5 Connection Lost 6. Security Error <ul style="list-style-type: none"> 6.1. Verification Failed 6.2. Decipher Failed 6.3. Certificate Expired 	